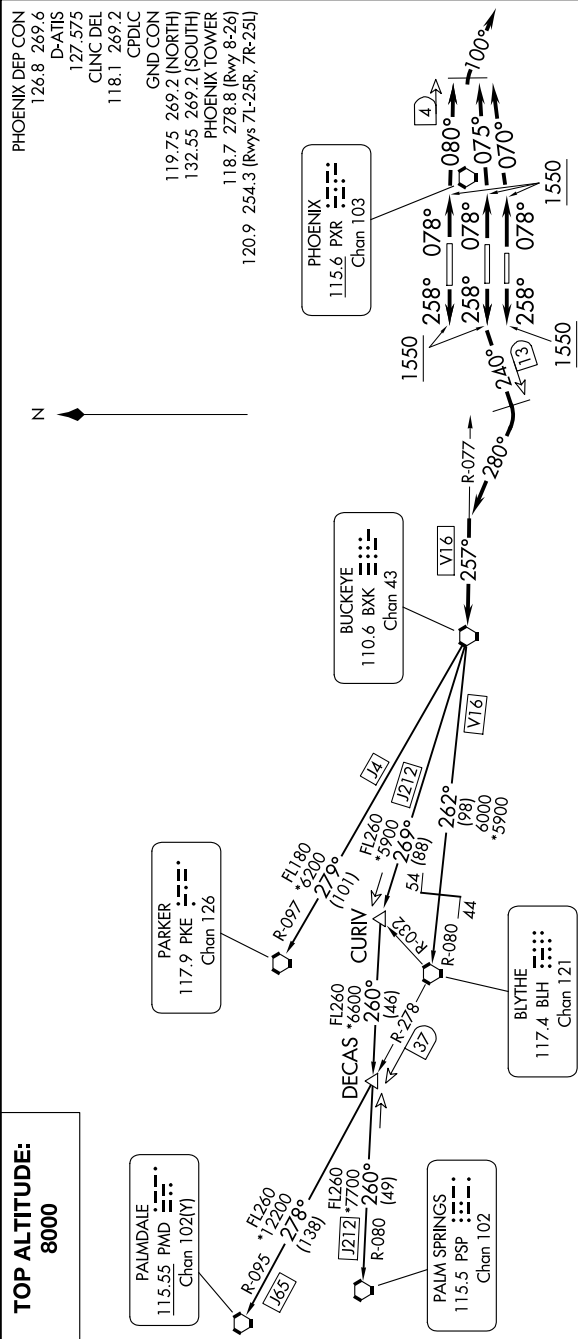


BUCKEYE FOUR DEPARTURE

AL-322 (FAA)

PHOENIX SKY HARBOR INTL (PHX)
PHOENIX, ARIZONA

SW-4, 07 AUG 2025 to 04 SEP 2025



TAKEOFF MINIMUMS

Rwys 7L/7R/8: Standard with minimum climb of 300' per NM to 8000.
Rwys 25L/25R/26: Standard with minimum climb of 350' per NM to 8000.

NOTE: Restricted to turbojet and turboprop aircraft only.

NOTE: RADAR and DME required.

NOTE: Aircraft requesting FL 220 and below must file BLYTHE Transition.

NOTE: Turbojets landing LAX, file PARKER Transition.

NOTE: Aircraft landing other than LAX and turboprops landing at LAX:

Requesting FL240 and above, file PALMDALE or PALM SPRINGS Transition.

NOTE: Chart not to scale.

(CONTINUED ON FOLLOWING PAGE)

SW-4, 07 AUG 2025 to 04 SEP 2025

BUCKEYE FOUR DEPARTURE