

BLYTHE FIVE ARRIVAL

AL-322 (FAA)

PHOENIX, ARIZONA

SW-4, 07 AUG 2025 to 04 SEP 2025

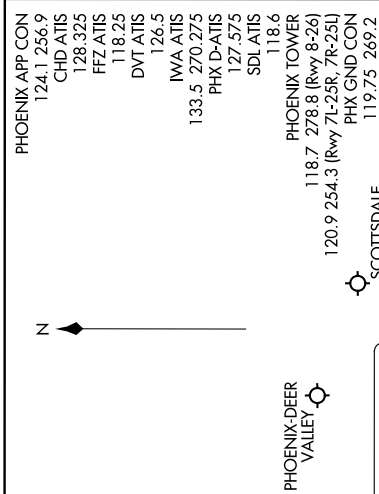
ARRIVAL ROUTE DESCRIPTION

BLYTHE TRANSITION (BLH,BLH5): From over BLH VORTAC on BLH R-082 to SALOM, then on GBN R-285 and IWA R-256 to ARLIN. Thence

PHOENIX SKY HARBOR INTL: Rwy 7L/R or 8: From over ARLIN, expect vectors to final approach course; Rwy 25L/R or 26: From over ARLIN, on IWA R-256 to TUKEE. Expect vectors to final approach course prior to TUKEE.

SATELLITE AIRPORTS: Expect vectors after passing SALOM.

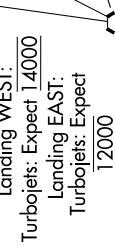
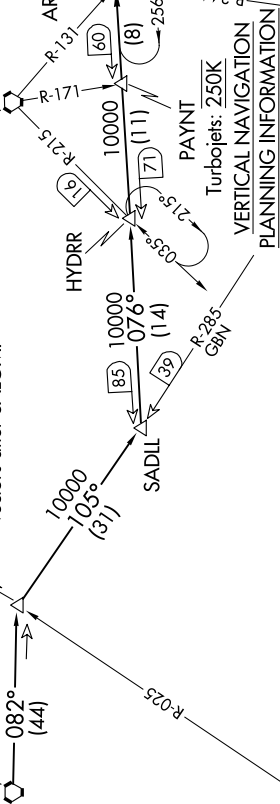
LOST COMMUNICATIONS: After ARLIN, on IWA R-256 and PXR R-143 to PXR VORTAC.



SALOM

VERTICAL NAVIGATION
PLANNING INFORMATION

Turboprop expect 17000
Turboprop landing KPHX expect
vectors after SALOM.



NOTE: BLYTHE ARRIVAL for aircraft FL 230 or below.
NOTE: RADAR required



NOTE: Chart not to scale.

BLYTHE FIVE ARRIVAL

PHOENIX, ARIZONA

SW-4, 07 AUG 2025 to 04 SEP 2025