

WEST VALLEY-ONE DEPARTURE (WESTV1.LUF)

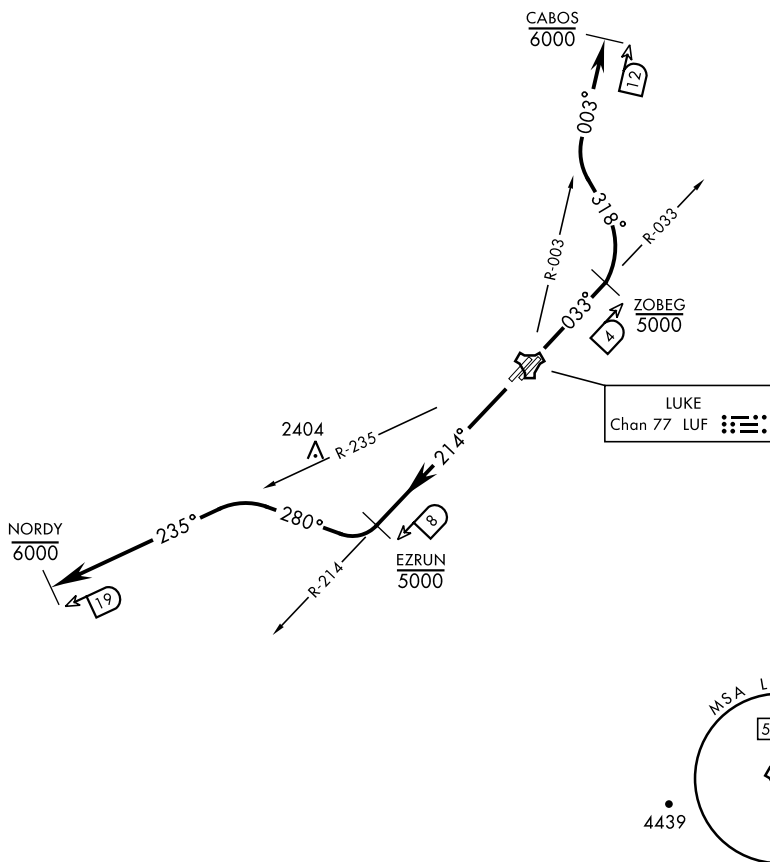
LUKE AFB (KLUF)

ATIS ★ 134.925 269.85
 CLNC DEL ★
 126.25 273.475
 GND CON ★
 133.175 335.8
 TOWER ★
 119.1 379.9
 DEP CON ★
 118.15 363.125

RADAR required

Rwy	Knots	60	120	180	240	300	360
21L/R	V/V(fpm)	280	560	840	1120	1400	1680

Minimum Climb Rate to 6000



DEPARTURE ROUTE DESCRIPTION

TAKEOFF RWY 3L/R: Climb on heading 033°, intercept LUF TACAN R-033 to ZOBEG, then turn left heading 318° to intercept LUF R-003 to CABOS, then via (assigned route/stereo). Cross ZOBEG at or below 5000. Cross CABOS at or below 6000, then as directed by ATC.

TAKEOFF RWY 21L/R: Climb on heading 214°, intercept LUF TACAN R-214 to EZRUN, then turn right heading 280° to intercept LUF R-235 to NORDY, then via (assigned route/stereo). Cross EZRUN at or below 5000. Cross NORDY at or below 6000, then as directed by ATC.

WEST VALLEY-ONE DEPARTURE (WESTV1.LUF)

GLENDAL, ARIZONA

LUKE AFB (KLUF)

Amdt 2 22FEB24

SW-4, 07 AUG 2025 to 04 SEP 2025