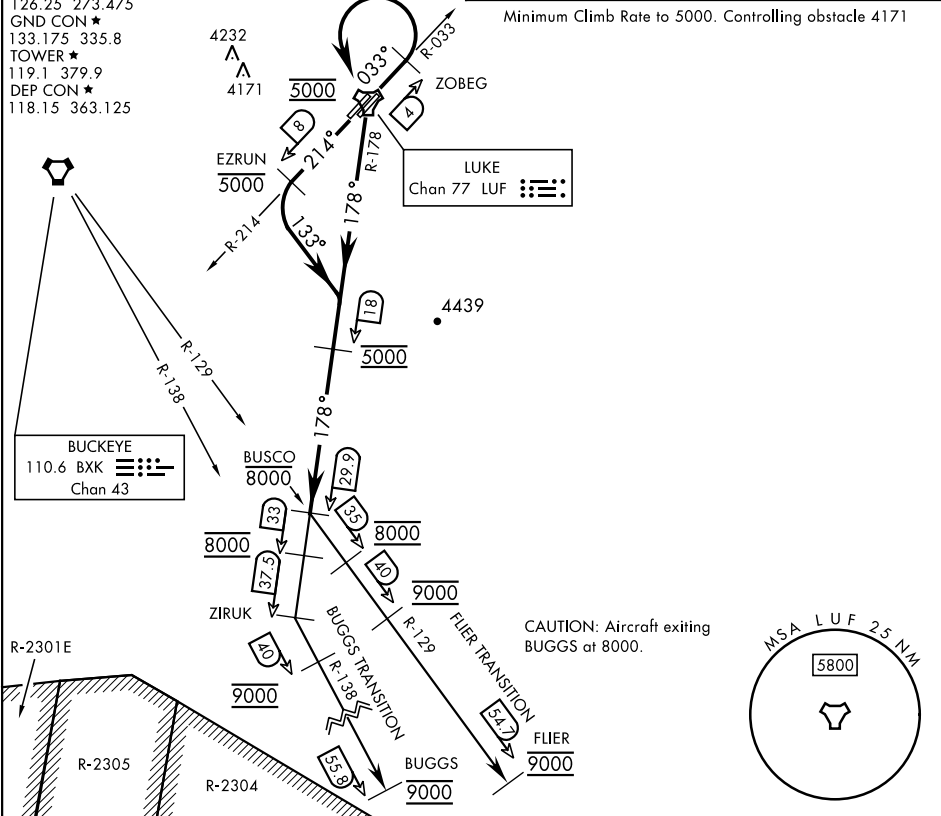


ATIS ★134.925 269.85	RADAR required	Rwy	Knots	60	120	180	240	300	360
CLNC DEL ★126.25 273.475		3L/R	V/V(fpm)	370	740	1110	1480	1850	2220
GND CON ★133.175 335.8									
TOWER ★119.1 379.9									
DEP CON ★118.15 363.125									

Minimum Climb Rate to 5000. Controlling obstacle 4171



DEPARTURE ROUTE DESCRIPTION

TAKEOFF RWY 3L/R: Climb on heading 033° to 5000. Abeam ZOBEG turn left direct LUF TACAN. Cross LUF at 5000 and proceed outbound via LUF R-178 to BUSCO. Cross LUF 18 DME at 5000. Cross BUSCO at or below 8000 or as instructed by ATC thence via assigned route/transition.

TAKEOFF RWY 21L/R: Climb on heading 214° to 5000. Abeam EZRUN turn left heading 133° to intercept LUF TACAN R-178 and proceed outbound to BUSCO. Cross abeam EZRUN at or below 5000. Cross LUF 18 DME at 5000. Cross BUSCO at or below 8000 or as instructed by ATC thence via assigned route/transition.

BUGGS TRANSITION (BUSCO9.BUGGS): Proceed via LUF R-178 to ZIRUK. Intercept and proceed via BXX VORTAC R-138 to BUGGS. Cross LUF R-178/33 DME at 8000. Cross BXX R-138/40 DME at 9000. Maintain 9000 until BUGGS or as assigned by ATC. CAUTION: Aircraft exiting BUGGS at 8000.

FLIER TRANSITION (BUSCO9.FLIER): Intercept and proceed via the BXX VORTAC R-129 to FLIER. Cross BXX 35 DME at 8000. Cross BXX 40 DME at 9000. Maintain 9000 until FLIER or as assigned by ATC.

SW-4, 07 AUG 2025 to 04 SEP 2025

SW-4, 07 AUG 2025 to 04 SEP 2025