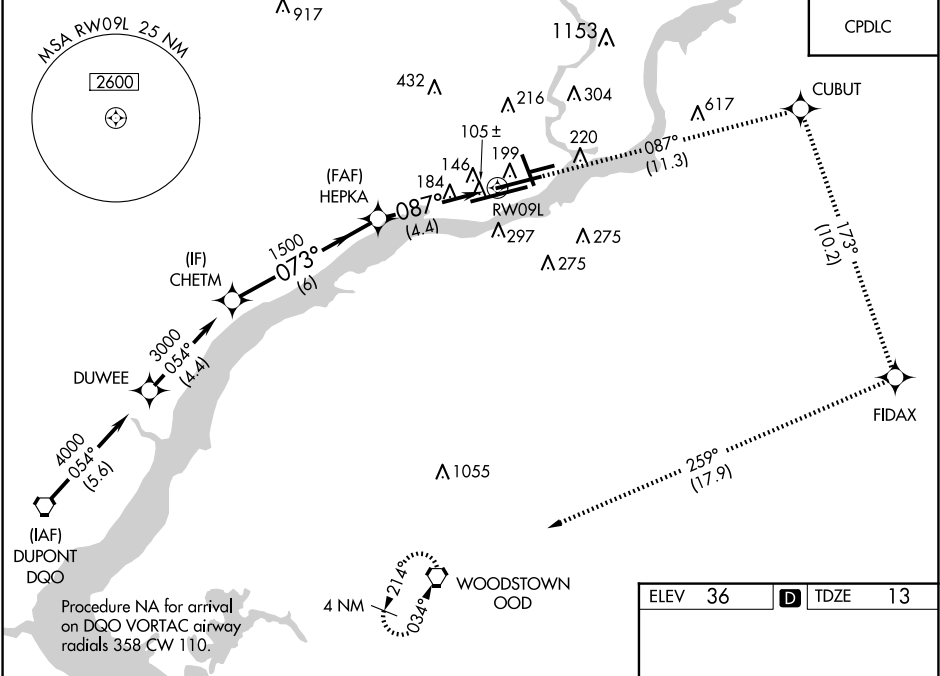


APP CRS	Rwy Idg	9500
087°	TDZE	13
	Apt Elev	36

RNAV (RNP) Z RWY 9L
PHILADELPHIA INTL (PHL)

RNP AR APCH - GPS.	MALSR
For uncompensated Baro-VNAV systems, procedure NA below -12°C or above 54°C. For inop ALS, increase RNP 0.11 visibility all Cats to RVR 6000 and RNP 0.30 visibility all Cats to 1% SM.	MISSED APPROACH: Climb to 3000 on track 087° to CUBUT and on track 173° to FIDAX and on track 259° to OOD VORTAC and hold.

D-ATIS	PHILADELPHIA APP CON	PHILADELPHIA TOWER	GND CON	CLNC DEL
ARR 133.4	124.35 319.15	118.5 327.05 (Rwys 9L/27R, 8/26 and 17/35)	121.9 348.6	118.85 348.6
DEP 135.925		135.1 327.05 (Rwy 9R/27L)		



<div>Procedure NA for arrival on DQO VORTAC airway radials 358 CW 110.</div> <div><div>3000</div><div>↑</div><div>tr 087°</div><div>CUBUT</div><div>tr 173°</div><div>FIDAX</div><div>tr 259°</div><div>OOD</div></div> <div><div>3000</div><div>073°</div><div>HEPKA</div><div>1500</div><div>087°</div><div>RW09L</div></div> <div><div>GP 3.00°</div><div>TCH 58</div></div> <div><div>6 NM</div><div>4.4 NM</div></div>				
CATEGORY	A	B	C	D
RNP 0.11 DA	382/35 369 (400-%)			
RNP 0.30 DA	434/45 421 (400-%)			
AUTHORIZATION REQUIRED				
TDZ/CL Rwy 9R HIRL all Rwys REIL Rwys 9L and 35				

NE-4, 07 AUG 2025 to 04 SEP 2025

NE-4, 07 AUG 2025 to 04 SEP 2025