


ILS Z or LOC RWY 17  
PHILADELPHIA INTL (PHL)

MALSF



**MISSED APPROACH:** Climb to 2000 then climbing right turn to 3000 direct OOD VORTAC and hold

	Procedure NA for arrival on PTW VORTAC airway radials 095 CW 188.	CPDLC
---	--	-------

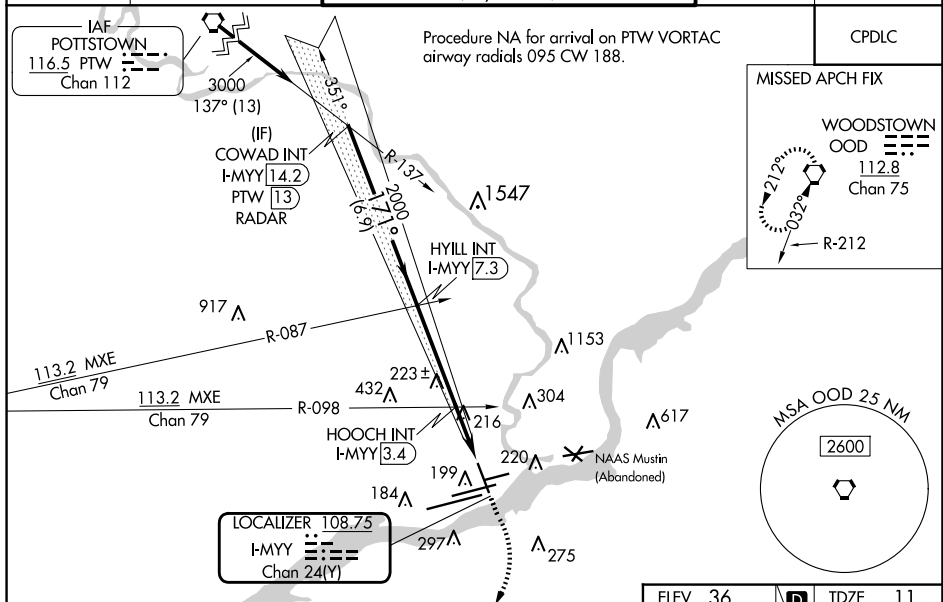
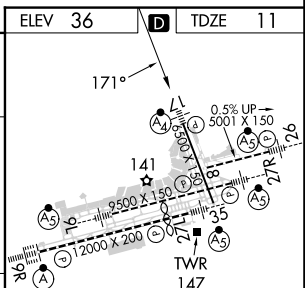


Diagram illustrating the geometry of the collision between the COWAD and HYILL ships. The diagram shows the heading (GS 3.00° TCH 50) and the relative positions of the ships at different times (I-MYY 14.2, I-MYY 13, I-MYY 7.3, I-MYY 3.4, I-MYY 2.5, I-MYY 1.2). The diagram also shows the distances in NM (Nautical Miles) and the times in I-MYY (International Maritime Year).

Symbol	Meaning
2000	Heading (GS 3.00° TCH 50)
Curved Arrow	Maneuver (OOD)
Pentagon	Maneuver (OOD)



CATEGORY	A	B	C	D
S-ILS 17	261/40 250 (300-¾)			
S-LOC 17	760/40 749 (800-¾)	760/55 749 (800-1)	760-1⅞ 749 (800-1⅞)	
CIRCLING	760-1 724 (800-1)	760-1¼ 724 (800-1¼)	760-2 724 (800-2)	760-2¼ 724 (800-2¼)
HOOCH FIX MINIMUMS				
S-LOC 17	480/40	469 (500-¾)	480/60	469 (500-1¼)
CIRCLING	540-1 504 (600-1)	600-1 564 (600-1)	620-1½ 584 (600-1½)	720-1½ 684 (700-1½)

TDZ/CL Rwy 9R HIRL all Rwys REIL Rwys 9L and 35						
FAF to MAP 6.1 NM						
Knots	60	90	120	150	180	
Min:Sec	6:06	4:04	3:03	2:26	2:02	

NE-4, 07 AUG 2025 to 04 SEP 2025