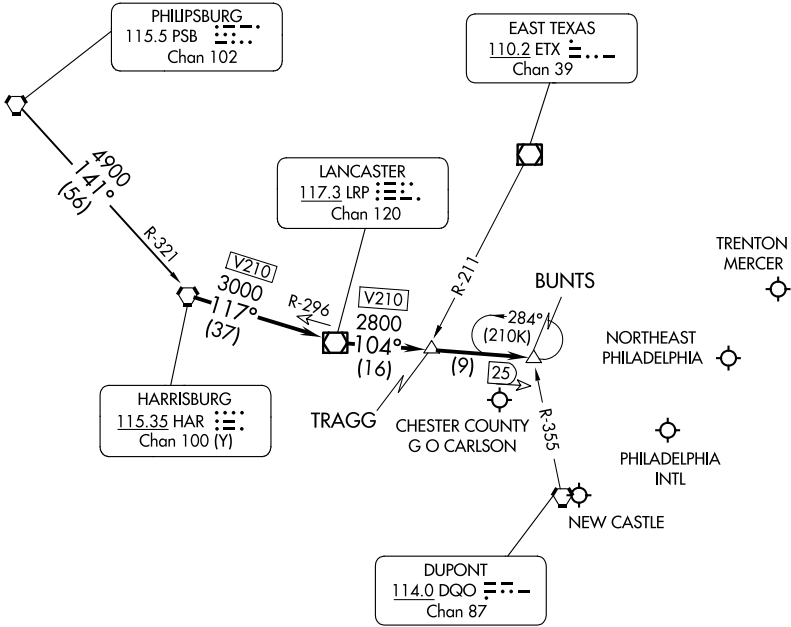


PHILADELPHIA APP CON
128.4 272.575
ILG ATIS 123.95
PHL ARR D-ATIS 133.4
PNE ATIS 121.15
TTN ATIS 126.775



NOTE: Expect to cross BUNTS at 8000.
NOTE: This STAR is for aircraft capable of 250K or greater.

NOTE: Chart not to scale.

ARRIVAL ROUTE DESCRIPTION

PHILIPSBURG TRANSITION (PSB.BUNTS3):

From over HAR VORTAC on HAR R-117 (V210) and LRP R-296 to LRP VOR/DME, thence on LRP R-104 (V210) to BUNTS. Expect RADAR vectors to final approach course.