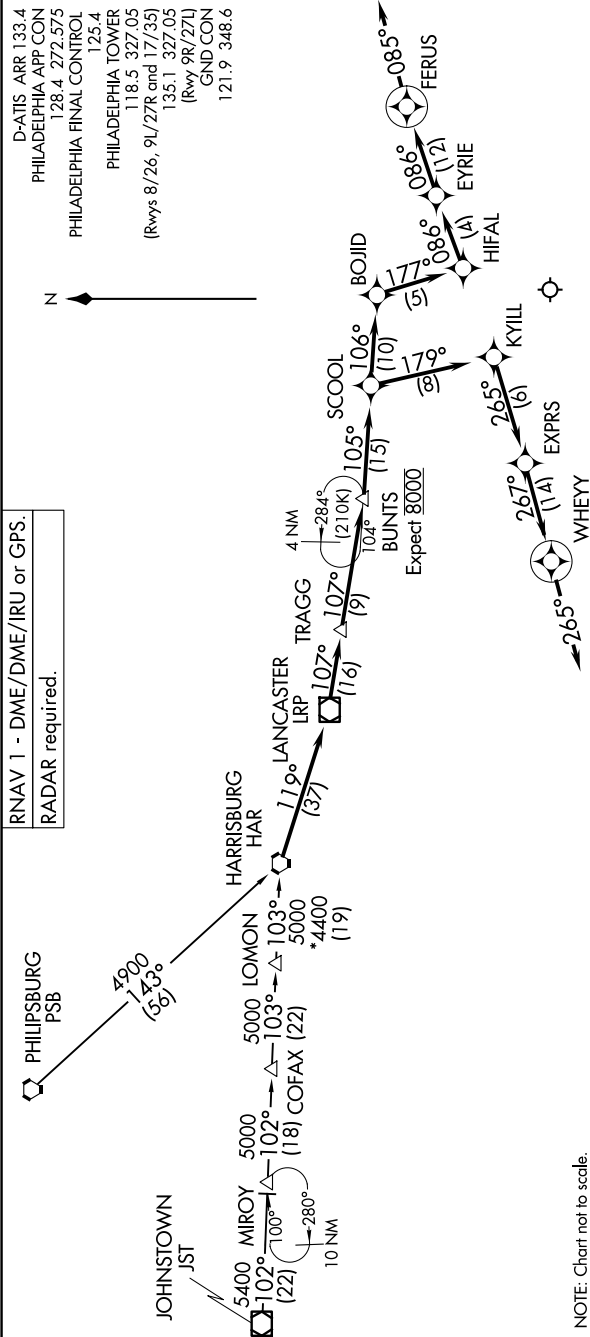


NE-4, 07 AUG 2025 to 04 SEP 2025



ARRIVAL ROUTE DESCRIPTION

JOHNSTOWN TRANSITION (JST.BOJID4):
PHILIPSBURG TRANSITION (PSB.BOJID4):

From HAR VORTAC on track 119° to LRP 107° to TRAGG, then on track 107° to BUNTS.
LANDING RUNWAYS 9L/R: From BUNTS on track 105° to SCOOOL, then on track 179° to KYILL, then on track 265° to EXPRS, then on track 267° to WHEY. Expect RADAR vectors to final approach course.
LANDING RUNWAYS 27L/R: From BUNTS on track 105° to SCOOOL, then on track 106° to BOJID, then on track 177° to HIFAL, then on track 086° to EYRIE, then on heading 085°. Expect RADAR vectors to final approach course.

NE-4, 07 AUG 2025 to 04 SEP 2025