

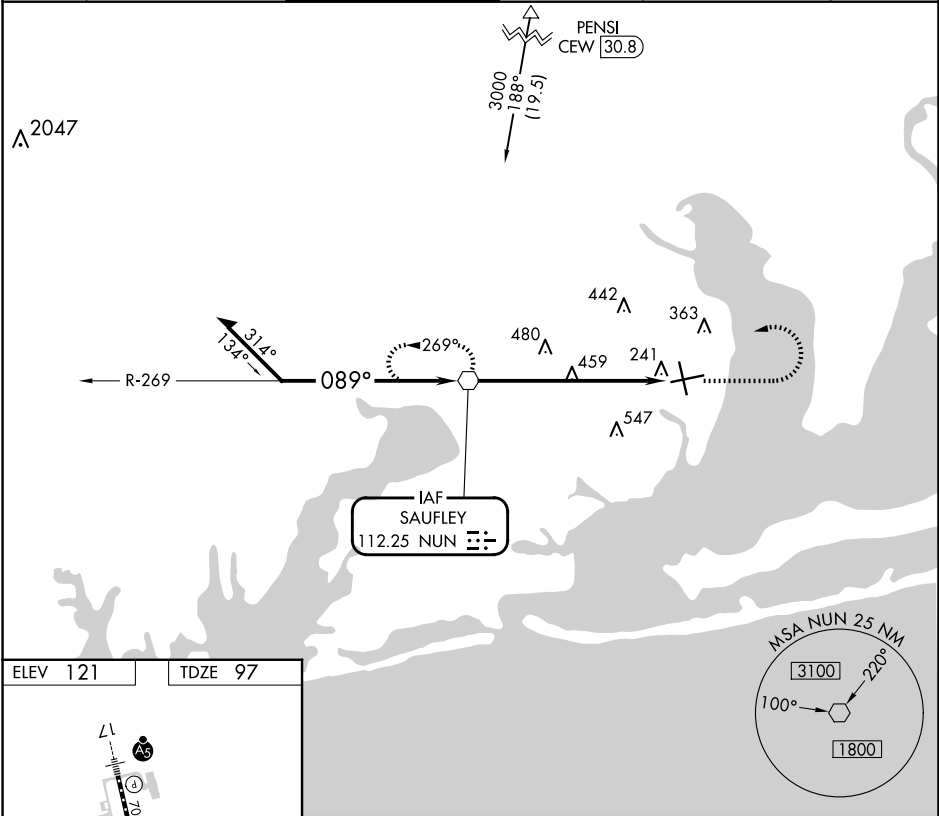
NUN VOR	APP CRS	Rwy Idg	7000
112.25	089°	TDZE	97
		Apt Elev	121

VOR RWY 8
PENSACOLA INTL (PNS)

CAUTION: Intensive student training invof airport.
Rwy 8 helicopter visibility reduction below ¾ SM NA.

MISSED APPROACH: Climb to 2000 then climbing left turn to 2600 direct NUN VOR and hold.

ATIS	PENSACOLA APP CON	PENSACOLA TOWER ★	GND CON	CLNC DEL	UNICOM
121.25	119.0 269.375	119.9 (CTAF) 0 257.8	121.9 348.6	123.725 256.875	122.95



ELEV 121

TDZE 97

REIL Rwy 8, 26 and 35
TDZ/CL Rwy 17 0
HIRL Rwy 8-26 and 17-35 0

FAF to MAP 7.3 NM

Knots	60	90	120	150	180
Min:Sec	7:18	4:52	3:39	2:55	2:26

Remain within 10 NM

NUN VOR

2000

2600

NUN

CATEGORY	A	B	C	D
S-8	800-1	703 (700-1)	800-2	703 (700-2)
CIRCLING	800-1	679 (700-1)	860-2 739 (800-2)	860-2¼ 739 (800-2¼)