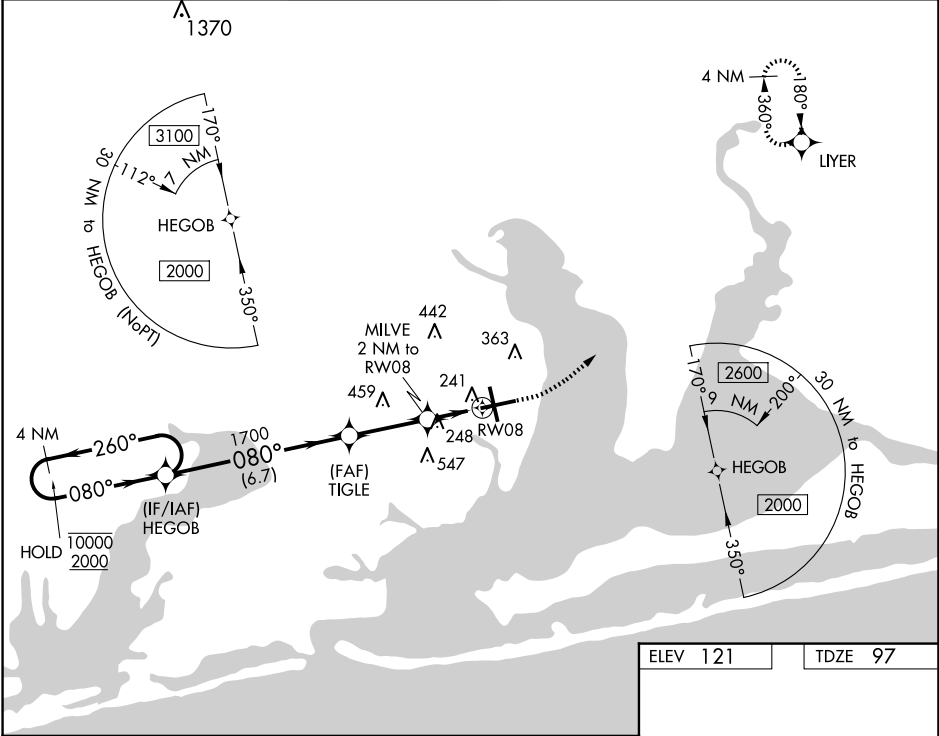


WAAS CH 86219 W08A	APP CRS 080°	Rwy Idg TDZE 97 Apt Elev 121
--	------------------------	--

RNAV (GPS) RWY 8
PENSACOLA INTL (PNS)

RNP APCH. ▼ Rwy 8 helicopter visibility reduction below ¾ SM NA. For uncompensated Baro-VNAV systems, LNAV/VNAV NA below 1°C or above 54°C. ▲ CAUTION: Intensive VFR student training in vicinity of airport.	MISSED APPROACH: Climb to 600 then climbing left turn to 2200 direct LIYER and hold.
---	--

ATIS 121.25	PENSACOLA APP CON 119.0 269.375	PENSACOLA TOWER ★ 119.9 (CTAF) 0 257.8	GND CON 121.9 348.6	CLNC DEL 123.725 256.875	UNICOM 122.95
-----------------------	---	--	-------------------------------	------------------------------------	-------------------------



4 NM Holding Pattern HEGOB		600	2200	LIYER
10000 ← 260° 2000 → 080°		*LNAV only.		
GP 3.00° TCH 55		*1.3 NM to RW08		
← 6.7 NM → 2.9 NM → 0.7 NM → 1.3 NM →		*780		
CATEGORY	A	B	C	D
LPV DA	347-1		250 (300-1)	
LNAV/VNAV DA	402-1		305 (300-1)	
LNAV MDA	560-1	463 (500-1)	560-1 3/8 463 (500-1 3/8)	
CIRCLING	580-1 459 (500-1)	680-1 559 (600-1)	860-2 739 (800-2)	860-2 1/4 739 (800-2 1/4)

