

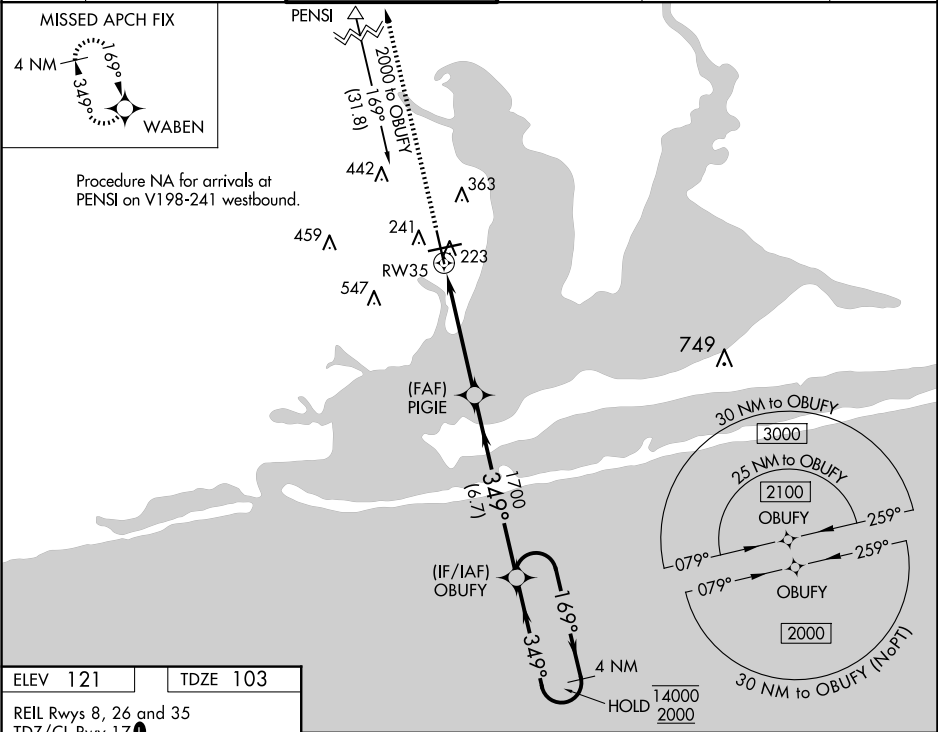
WAAS CH 40020 W35A	APP CRS 349°	Rwy Idg 7004 TDZE 103 Apt Elev 121
--	------------------------	---

RNAV (GPS) RWY 35

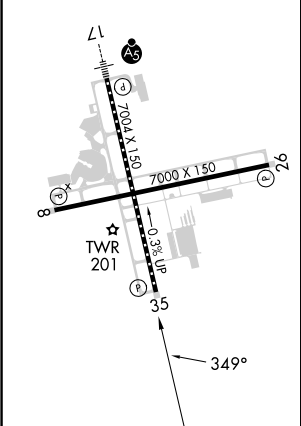
PENSACOLA INTL (PNS)

RNP APCH-GPS.		MISSED APPROACH: Climb to 2700 direct WABEN and hold.			
⚠ For uncompensated Baro-VNAV systems, LNAV/VNAV NA below 1°C or above 54°C. CAUTION: Intensive VFR student training in vicinity of airport.					

ATIS 121.25	PENSACOLA APP CON 119.0 269.375	PENSACOLA TOWER ★ 119.9 (CTAF) 0 257.8	GND CON 121.9 348.6	CLNC DEL 123.725 256.875	UNICOM 122.95
-----------------------	---	--	-------------------------------	------------------------------------	-------------------------



ELEV 121	TDZE 103
REIL Rwy 8, 26 and 35 TDZ/CL Rwy 17 HIRL Rwy 8-26 and 17-35	



2700 WABEN		OBUFY 4 NM Holding Pattern			
		GP 3.00° TCH 55			
1 NM to RW35		1700			
1 NM		3.8 NM			
1 NM		6.7 NM			
CATEGORY	A	B	C	D	
LPV DA	303/40		200 (200-¾)		
LNAV/VNAV DA	384/45		281 (300-¾)		
LNAV MDA	480/55		377 (400-1)		
CIRCLING	580-1 459 (500-1)	680-1 559 (600-1)	860-2 739 (800-2)	860-2¼ 739 (800-2¼)	