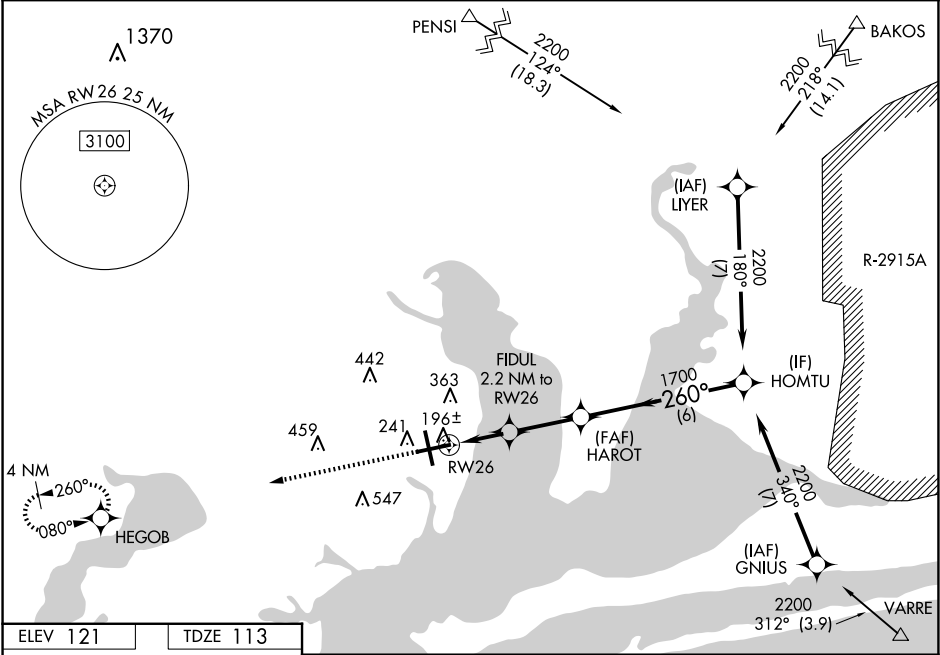


WAAS CH 90119 W26A	APP CRS 260°	Rwy Idg 7000 TDZE 113 Apt Elev 121
--	------------------------	---

RNAV (GPS) RWY 26
PENSACOLA INTL (PNS)

RNP APCH. ▼ For uncompensated Baro-VNAV systems, LNAV/VNAV NA below 1°C or above 54°C. CAUTION: Intensive VFR student training in vicinity of airport. Rwy 26 helicopter visibility reduction below ¾ SM NA. ▲		MISSED APPROACH: Climb to 2000 direct HEGOB and hold
--	--	--

ATIS 121.25	PENSACOLA APP CON 119.0 269.375	PENSACOLA TOWER ★ 119.9 (CTAF) 257.8	GND CON 121.9 348.6	CLNC DEL 123.725 256.875	UNICOM 122.95
-----------------------	---	--	-------------------------------	------------------------------------	-------------------------



REIL Rwy 8, 26 and 35
TDZ/CL Rwy 17
HIRL Rwy 8-26 and 17-35

<div>2000</div> <div>↑</div>	<div>HEGOB</div> <div></div>		<div>HOMTU</div> <div>2200</div>	
<div>*LNAV only.</div>		<div>FIDUL</div> <div>2.2 NM to RW26</div>		
<div>RW26</div> <div></div>	<div>HAROT</div> <div>1700</div>	<div>260°</div>	<div>GP 3.00°</div> <div>TCH 55</div>	
<div>*0.9 NM to RW26</div>		<div>860*</div>		
<div>0.9</div>	<div>1.3</div>	<div>2.6 NM</div>	<div>6 NM</div>	
<div>CATEGORY</div>		<div>A</div>		
<div>LPV DA</div>	<div>DA</div>	<div>363-¾ 250 (300-¾)</div>	<div>C</div>	
<div>LNAV/VNAV</div>		<div>363-¾ 250 (300-¾)</div>		
<div>LNAV MDA</div>	<div>MDA</div>	<div>460-1 347 (400-1)</div>	<div>D</div>	
<div>CIRCLING</div>		<div>580-1 459 (500-1)</div>		
	<div>680-1</div>	<div>860-2</div>	<div>860-2¼</div>	
		<div>739 (800-2)</div>		
	<div>559 (600-1)</div>	<div>739 (800-2¼)</div>		