

WAAS CH <b>73012</b> <b>W08A</b>	APP CRS <b>074°</b>	Rwy Idg TDZE <b>1486</b> Apt Elev <b>1497</b>
--	------------------------	---

RNAV (GPS) RWY 8

EASTERN OREGON RGNL AT PENDLETON (PDT)

RNP APCH.

▼

▲

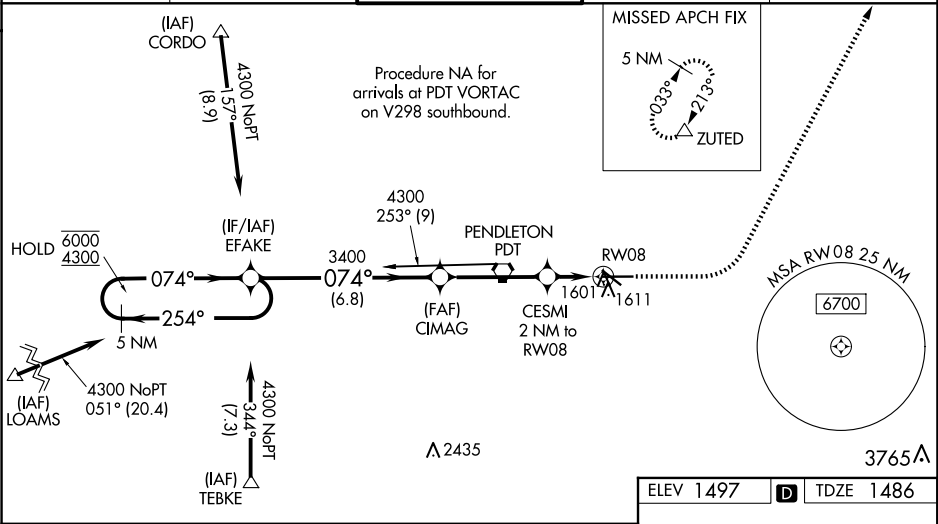
Circling to Rwy 11 NA at night. Baro-VNAV and VDP NA when using Walla Walla altimeter setting. Rwy 8 helicopter visibility reduction below  $\frac{3}{4}$  SM NA. For uncompensated Baro-VNAV systems, LNAV/VNAV NA below -17°C or above 54°C. Inop table does not apply to LPV all Cats and LNAV Cats C/D. When local altimeter setting not received, use Walla Walla altimeter setting and increase all DA 122 feet and all visibilities  $\frac{1}{4}$  SM. Increase all MDA 140 feet and LNAV Cat C/D and Circling Cat C visibilities  $\frac{1}{4}$  SM and Circling Cat D  $\frac{1}{2}$  SM. For inop ALS, increase LNAV/VNAV all Cats visibility to  $\frac{3}{8}$  SM. For inop ALS when using Walla Walla altimeter setting, increase LNAV/VNAV all Cats visibility to  $1\frac{1}{8}$  SM.

ODALS

MISSED APPROACH:

Climb to 2100 then climbing left turn 5000 to ZUTED and hold.

ASOS <b>118.325</b>	SPOKANE APP CON * <b>133.15 379.15</b>	PENDLETON TOWER * <b>119.7 (CTAF) 257.8</b>	GND CON <b>121.9 257.8</b>	UNICOM <b>122.95</b>
------------------------	---	--	-------------------------------	-------------------------



5 NM Holding Pattern

EFAKE

6000

4300

254°

074°

074°

3400

CIMAG

3400

CESMI 2 NM to RW08

\*1 NM to RW08

RW08

\*2180

6.8 NM

3.8 NM

1

1

2100

5000

ZUTED

\*LNAV only

GP 3.00°

TCH 56

CATEGORY	A	B	C	D
LPV DA		1736- $\frac{3}{4}$	250 (300- $\frac{3}{4}$ )	
LNAV/VNAV DA		1769- $\frac{3}{4}$	283 (300- $\frac{3}{4}$ )	
LNAV MDA	1860- $\frac{3}{4}$	374 (400- $\frac{3}{4}$ )	1860-1	374 (400-1)
CIRCLING	1920-1 423 (500-1)	1960-1 463 (500-1)	1980-1 $\frac{1}{2}$ 483 (500-1 $\frac{1}{2}$ )	2200-2 $\frac{1}{4}$ 703 (800-2 $\frac{1}{4}$ )

REIL Rwy 11 and 29

MIRL Rwy 11-29

HIRL Rwy 8-26