

PENDLETON, OREGON

AL-316 (FAA)

24137

WAAS CH 78412 W26A	APP CRS 254°	Rwy Idg 6301 TDZE 1487 Apt Elev 1497
--	------------------------	---

RNAV (GPS) RWY 26

EASTERN OREGON RGNL AT PENDLETON (PDT)

RNP APCH.

T Circling Rwy 11 NA at night. For uncompensated Baro-VNAV systems, LNAV/VNAV NA below -17°C or above 54°C. For inop ALS, increase LNAV/VNAV all Cats visibility to RVR 4500.
#RVR 1800 authorized with the use of FD or AP or HUD to DA.

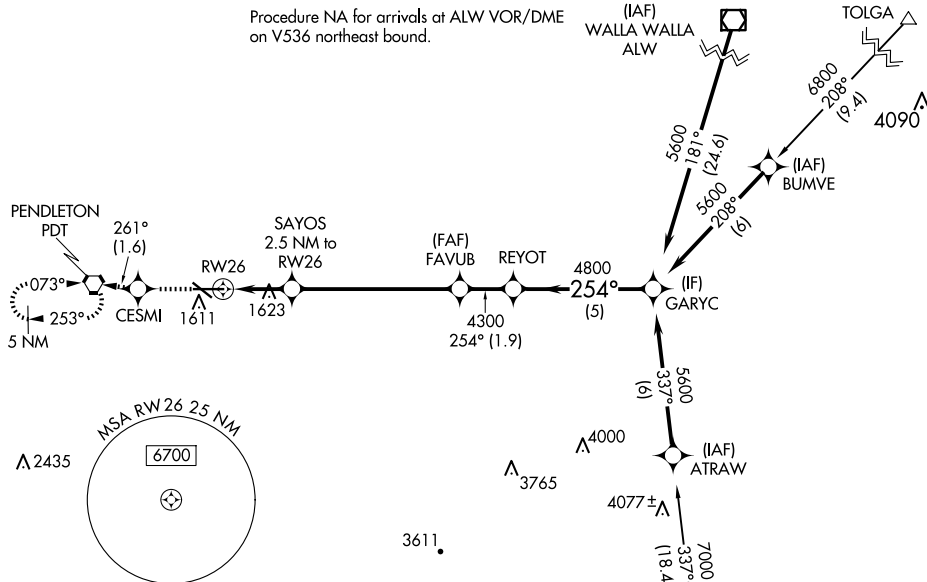
MALSR



MISSED APPROACH: Climb to 4300 direct CESMI and on track 261° to PDT VORTAC and hold, continue climb-in-hold to 4300.

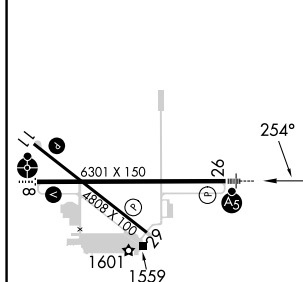
ASOS 118,325	SPOKANE APP CON* 133.15 379.15	PENDLETON TOWER* 119.7 (CTAF) 0 257.8	GND CON 121.9 257.8	UNICOM 122.95
-----------------	-----------------------------------	--	------------------------	------------------

Procedure NA for arrivals at ALW VOR/DME
on V536 northeast bound.

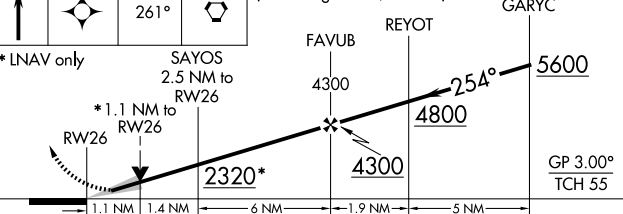



ELEV 1497	D	TDZE 1487
-----------	----------	-----------

Procedure NA for arrivals at LACED
on V4 southeast bound.



4300	CESMI	tr	PDT	VGSI and RNAV glidepath not coincident (VGSI Angle 3.00/TCH 48).
------	-------	----	-----	--



CATEGORY		A	B	C	D
LPV	DA#	1687/24 200 (200-½)			
LNAV/ VNAV	DA	1800/24 313 (400-½)			
LNAV	MDA	1880/24 393 (400-½)		1880/40 393 (400-¾)	
 CIRCLING		1920-1 423 (500-1)	1960-1 463 (500-1)	1980-1½ 483 (500-1½)	2200-2¼ 703 (800-2¼)

REIL Rwy 11 and 29 **L**
MIRL Rwy 11-29 **L**
HIRL Rwy 8-26 **L**

PENDLETON, OREGON

Orig-F 31DEC20

EASTERN OREGON RGNL AT PENDLETON (PDT)

45°42'N-118°51'W

RNAV (GPS) RWY 26

NW-1, 07 AUG 2025 to 04 SEP 2025

NW-1, 07 AUG 2025 to 04 SEP 2025