

LOC I-PDT	APP CRS	Rwy Idg	6301
<u>110.3</u>	254°	TDZE	1487
		Apt Elev	1497

ILS or LOC RWY 26

EASTERN OREGON RGNL AT PENDLETON (PDT)

DME required.

T DME from PDT VORTAC. Simultaneous reception of I-PDT
A and PDT DME required.
*RVR 1800 authorized with use of FD or AP or HUD to DA.

MALSR



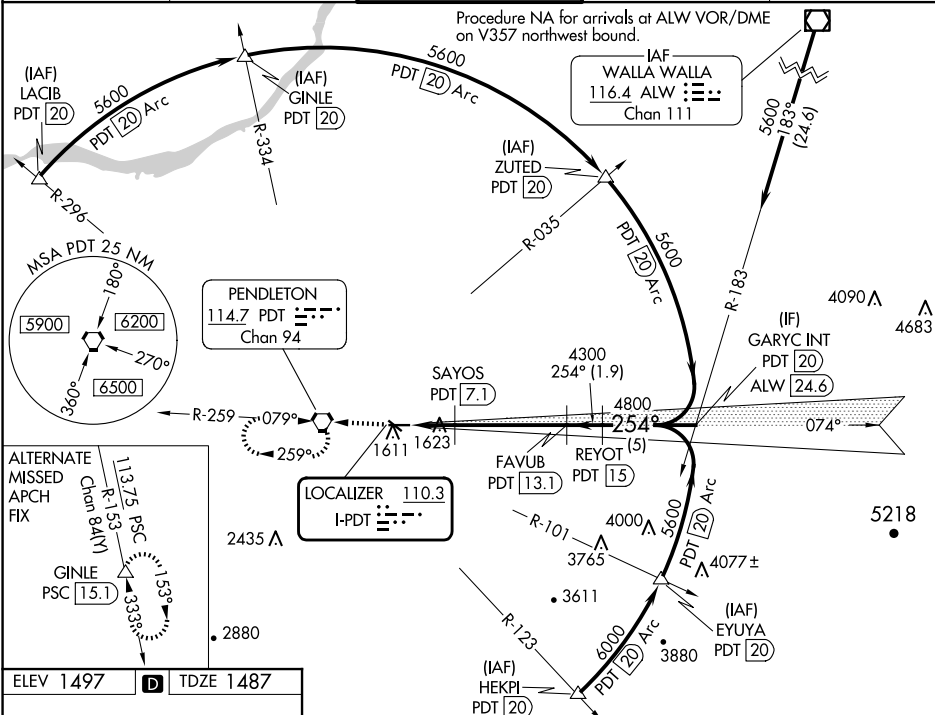
MISSED APPROACH: Climb to 4200 direct PDT VORTAC and hold, continue climb-in-hold to 4200.

ASOS
118.325

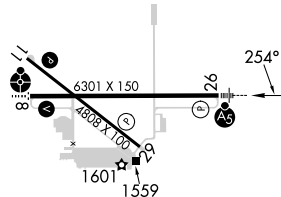
SPOKANE APP CON ★
133.15 379.15

PENDLETON TOWER★
119.7 (CTAF) 257.8

GND CON
121.9 257.8

UNICOM
122.95

ELEV 1497		TDZE 1487
-----------	---	-----------



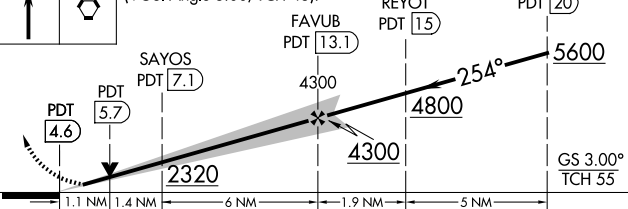
REIL Rwy 11 and 29 **L**
MIRL Rwy 11-29 **L**
HIRL Rwy 8-26 **L**


PENDLETON, OREGON
Amdt 25E 08SEP22

4200	PDT
	

VGSI and ILS glidepath not coincident (VGSI Angle 3.00/TCH 48).

GARYC INT



CATEGORY	A	B	C	D
S-ILS 26*	1687/24 200 (200-½)			
S-LOC 26	1880/24 393 (400-½)		1880/40 393 (400-¾)	
 CIRCLING	1920-1 423 (500-1)	1960-1 463 (500-1)	1980-1½ 483 (500-1½)	2200-2¼ 703 (800-2¼)

EASTERN OREGON RGNL AT PENDLETON (PDT)

ILS or LOC RWY 26