

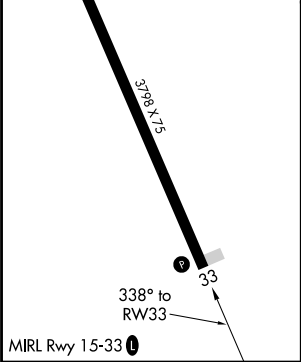
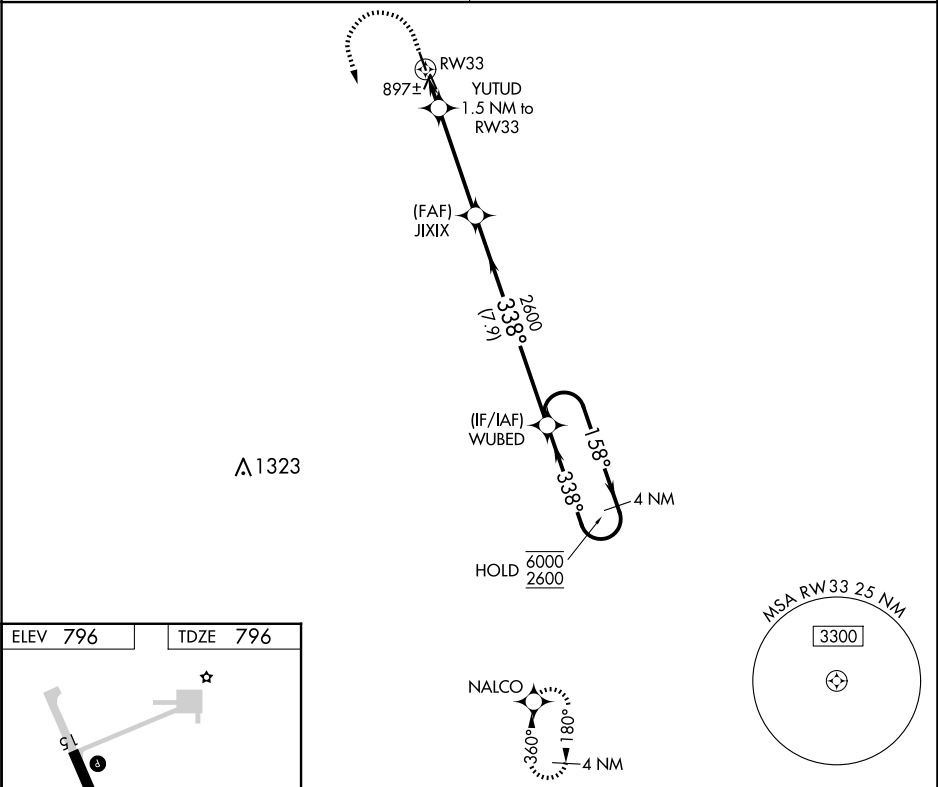
APP CRS	Rwy Idg	3798
338°	TDZE	796
	Apt Elev	796

RNAV (GPS) RWY 33

PEMBINA MUNI (PMB)

RNP APCH+GPS.	
<div><div>▼</div><div>▲NA</div></div>	Circling Rwy 15 NA at night. Obtain local altimeter setting on CTAF; when not received, use Hallock altimeter setting and increase all MDA 60 feet and LNAV Cat C visibility ¼ SM.
MISSED APPROACH: Climb to 1200 then climbing left turn 2600 direct NALCO and hold.	

MINNEAPOLIS CENTER	UNICOM
132.15 269.6	122.8 (CTAF) 0



1200	2600	NALCO	VGSi and descent angles not coincident (VGSi Angle 3.00/TCH 26).	
↑	↪	✧	JIXIX	WUBED
YUTUD 1.5 NM to RW33		≤3.00° TCH 40	338°	158°
RW33		2600	4 NM Holding Pattern	6000
1320		7.9 NM	338°	2600
1.5		4.1 NM		
CATEGORY	A	B	C	D
LNAV MDA	1160-1 364 (400-1)			NA
<div><div>◻</div><div>CIRCLING</div></div>	1200-1 404 (500-1)	1260-1 464 (500-1)	1260-1½ 464 (500-1½)	NA

NC-1, 07 AUG 2025 to 04 SEP 2025

NC-1, 07 AUG 2025 to 04 SEP 2025