


TACAN Z RWY 14

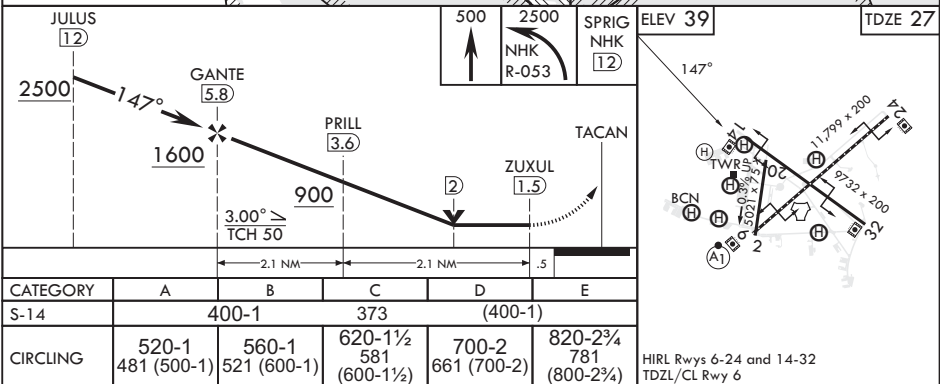
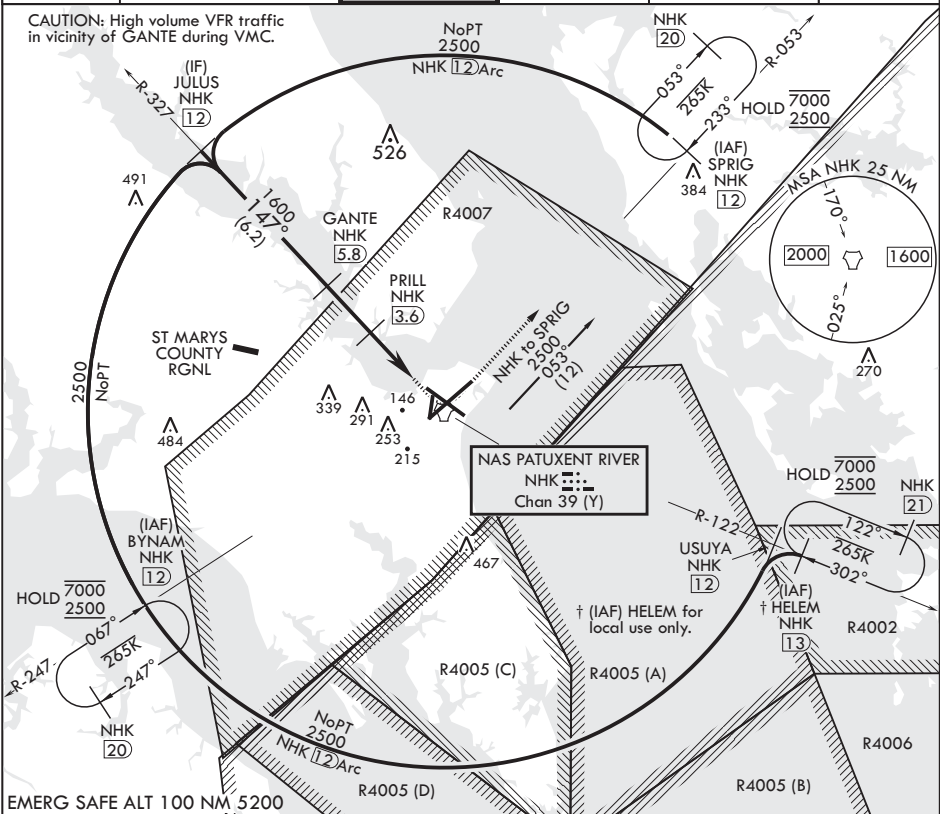
TACAN NHK Chan 39 (Y)	APCH CRS 147°	Rwy Idg 9732 TDZE 27 Arprt Elev 39
---------------------------------	-------------------------	---

(PUSN) PATUXENT RIVER NAS (TRAPNELL FLD) (KNHK)

	<p>MISSED APPROACH: Climb to 500, then climbing left turn to 2500 on NHK TACAN R-053 to SPRIG and hold.</p>
---	---

ATIS 322.425	APP CON/DEP CON* 121.0 250.3	TOWER 123.7 343.65	GND CON 120.6 336.4	CLNC DEL 135.2 316.125	ASR/PAR
-----------------	---------------------------------	-----------------------	------------------------	---------------------------	---------

CAUTION: High volume VFR traffic in vicinity of GANTE during VMC.



PATUXENT RIVER, MARYLAND

38°17'N - 76°25'W PATUXENT RIVER NAS (TRAPNELL FLD) (KNHK)

Amdt 1 07AUG25

TACAN Z RWY 14

NE-3, 07 AUG 2025 to 04 SEP 2025

NE-3, 07 AUG 2025 to 04 SEP 2025