

PATUXENT RIVER, MARYLAND

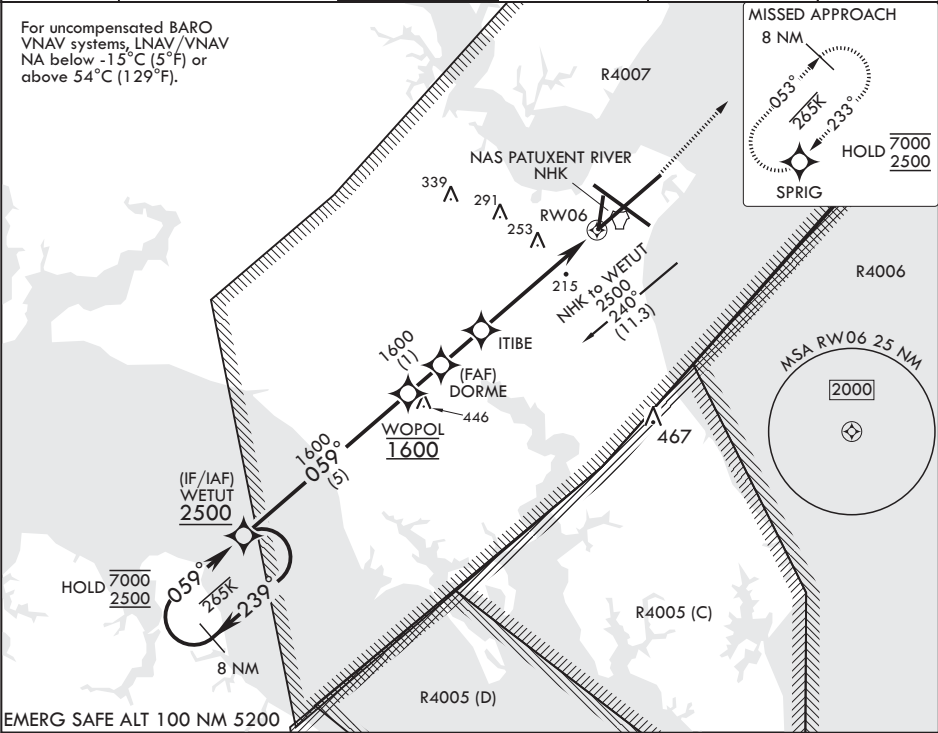
RNAV (GPS) RWY 6

WAAS CH 54738 W06A	APCH CRS 059°	Rwy ldg 11,799 TDZE 39 Arprt Elev 39
--------------------------	------------------	--

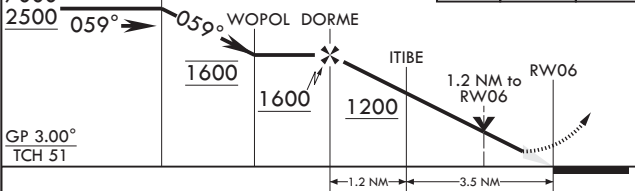
(USN) PATUXENT RIVER NAS (TRAPNELL FLD) (KNHK)

RNP APCH-GPS	ALSIF-1	MISSED APPROACH: Climb to 600 then climbing left turn to 2500 direct SPRIG and hold.
▼ * When ALS inop, increase vis to 3/4 mile. ** When ALS inop, increase vis to 1 3/8 miles. *** When ALS inop, increase CAT AB vis to 1 mile, CAT CDE vis to 1 3/8 miles.		

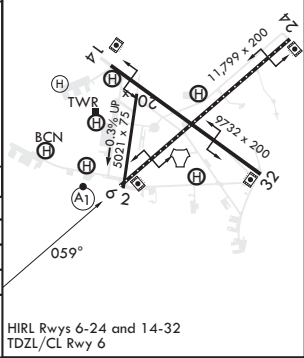
ATIS 322.425	APP CON/DEP CON* 121.0 250.3	TOWER 123.7 343.65	GND CON 120.6 336.4	CLNC DEL 135.2 316.125	ASR/PAR
-----------------	---------------------------------	-----------------------	------------------------	---------------------------	---------



8 NM Holding Pattern WETUT	600	2500	SPRIG	ELEV 39	TDZE 39
7000 2500 059°	crs 059°				



CATEGORY	A	B	C	D	E
LPV DA*	239-½	200	200	(200-½)	
LNAV/VNAV DA**	480-¾	441	441	(500-¾)	
LNAV MDA***	480-½ 441 (500-½)	480-¾ 441 (500-¾)	480-¾ 441 (500-¾)	480-¾ 441 (500-¾)	480-¾ 441 (500-¾)
CIRCLING	520-1 481 (500-1)	560-1 521 (600-1)	620-1½ 581 (600-1½)	700-2 661 (700-2)	820-2¾ 781 (800-2¾)



PATUXENT RIVER, MARYLAND

38°17'N - 76°25'W PATUXENT RIVER NAS (TRAPNELL FLD) (KNHK)

Amtrd 4 07AUG25

RNAV (GPS) RWY 6

NE-3, 07 AUG 2025 to 04 SEP 2025

NE-3, 07 AUG 2025 to 04 SEP 2025