

## RNAV (GPS) RWY 32

WAAS CH <b>66540</b> W32A	APCH CRS 316°	Rwy Idg <b>9732</b> TDZE <b>18</b> Arpt Elev <b>39</b>
---------------------------------	------------------	--

(USN)

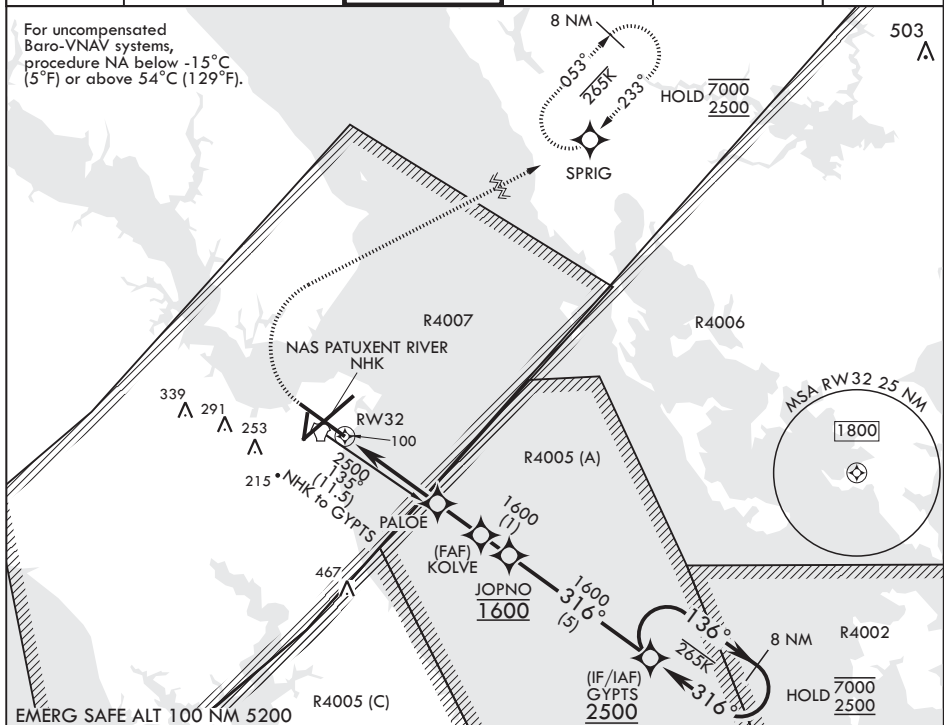
PATUXENT RIVER NAS (TRAPNELL FLD) (KNHK)

RNP APCH-GPS

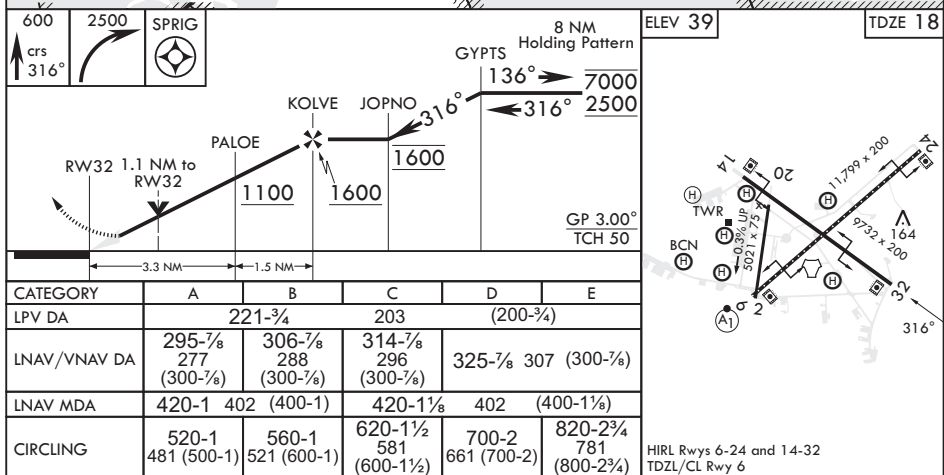
**MISSED APPROACH:** Climb to 600, then climbing right turn to 2500 direct SPRIG and hold.

ATIS 322.425	APP CON/DEP CON* 121.0 250.3	TOWER 123.7 343.65	GND CON 120.6 336.4	CLNC DEL 135.2 316.125	ASR/PAR
-----------------	---------------------------------	-----------------------	------------------------	---------------------------	---------

For uncompensated Baro-VNAV systems, procedure NA below -15°C (5°F) or above 54°C (129°F).



NE-3, 07 AUG 2025 to 04 SEP 2025



PATUXENT RIVER, MARYLAND

38°17'N - 76°25'W PATUXENT RIVER NAS (TRAPNELL FLD) (KNHK)

## RNAV (GPS) RWY 32

Amdt 5 07AUG25