

PATUXENT RIVER, MARYLAND

WAAS CH 72589 W24A	APCH CRS 239°	Rwy ldg TDZE Arpt Elev	11,799 20 39
--------------------------	------------------	------------------------------	--------------------

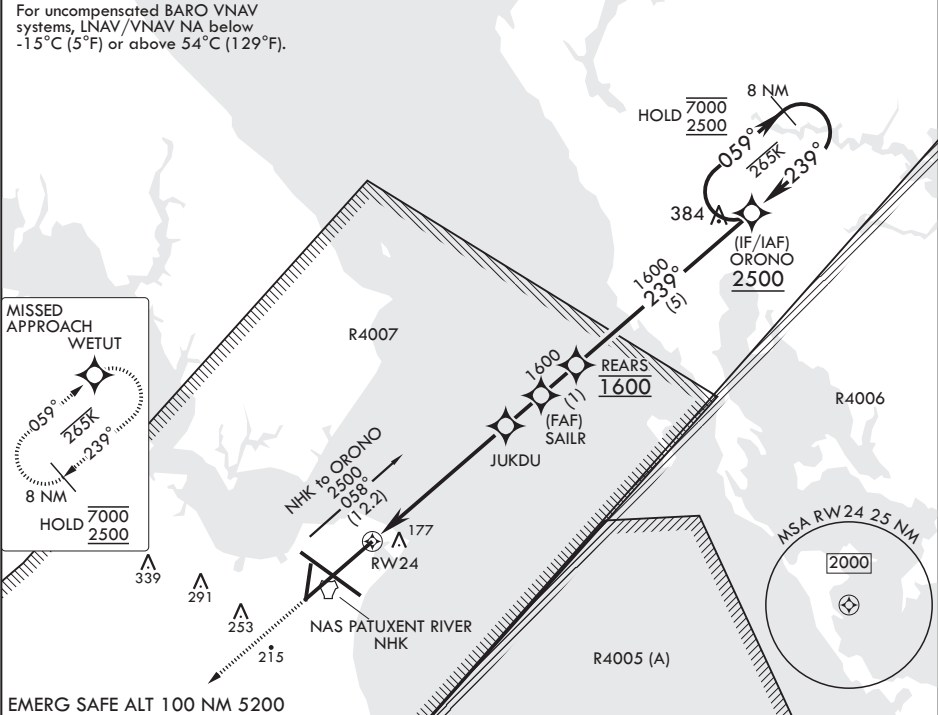
(USN)

RNAV (GPS) RWY 24

PATUXENT RIVER NAS (TRAPNELL FLD) (KNHK)

RNP APCH-GPS	MISSED APPROACH: Climb to 2500 direct WETUT and hold.
--------------	---

ATIS 322.425	APP CON/DEP CON* 121.0 250.3	TOWER 123.7 343.65	GND CON 120.6 336.4	CLNC DEL 135.2 316.125	ASR/PAR
-----------------	---------------------------------	-----------------------	------------------------	---------------------------	---------



2500  
↑  
WETUT

8 NM  
Holding Pattern  
ORONO  
059° → 7000  
← 239° 2500

RW24 1.2 NM to RW24

JUKDU 1260

SAILR 1600

REARS 1600

GP 3.00°  
TCH 50

3.8 NM 1 NM

ELEV 39

TDZE 20

239°

14-32

11,799 x 200

2732 x 200

502 x 75

503 x 75

2

1

TWR

BCN

CATEGORY	A	B	C	D	E
LPV DA	220-¾		200	(200-¾)	
LNAV/VNAV DA	308-¾ 288 (300-¾)	319-¾ 299 (300-¾)	327-¾ 307 (300-¾)	338-¾	318 (300-¾)
LNAV MDA	440-1	420 (500-1)	440-1½	420	(500-1½)
CIRCLING	520-1 481 (500-1)	560-1 521 (600-1)	620-1½ 581 (600-1½)	700-2 661 (700-2)	820-2¾ 781 (800-2¾)

HIRL Rwy 6-24 and 14-32  
TDZL/CL Rwy 6

PATUXENT RIVER, MARYLAND

38°17'N - 76°25'W PATUXENT RIVER NAS (TRAPNELL FLD) (KNHK)

Amtr 4 07AUG25

RNAV (GPS) RWY 24

NE-3, 07 AUG 2025 to 04 SEP 2025

NE-3, 07 AUG 2025 to 04 SEP 2025