

PATUXENT RIVER, MARYLAND

RNAV (GPS) RWY 14

WAAS CH <b>87821</b> <b>W14A</b>	APCH CRS <b>136°</b>	Rwy ldg TDZE <b>27</b> Arpt Elev <b>39</b>
--	-------------------------	--

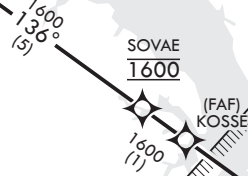
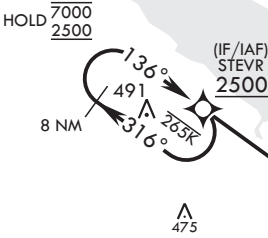
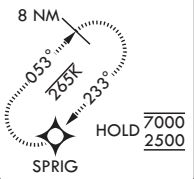
(USN) PATUXENT RIVER NAS (TRAPNELL FLD) (KNHK)

RNP APCH-GPS	MISSED APPROACH: Climb to 600, then climbing left turn to 2500 direct SPRIG and hold.
RADAR required	

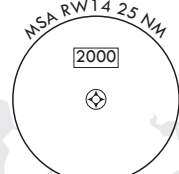
ATIS <b>322.425</b>	APP CON/DEP CON* <b>121.0 250.3</b>	TOWER <b>123.7 343.65</b>	GND CON <b>120.6 336.4</b>	CLNC DEL <b>135.2 316.125</b>	ASR/PAR
------------------------	--	------------------------------	-------------------------------	----------------------------------	---------

For uncompensated Baro-VNAV systems, Procedure NA below -15°C (5°F) or above 54°C (129°F).

MISSED APPROACH



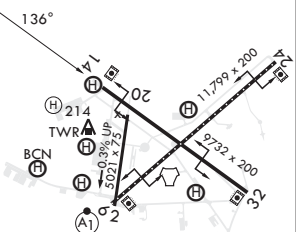
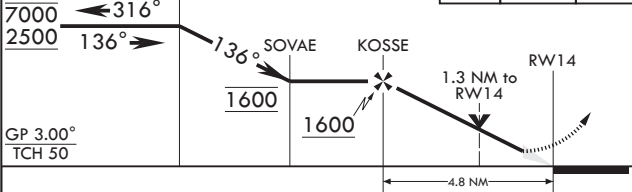
CAUTION: High volume VFR traffic in vicinity of KOSSE during VMC.



EMERG SAFE ALT 100 NM 5200



8 NM Holding Pattern	600	2500	SPRIG	ELEV 39	TDZE 27
----------------------	-----	------	-------	---------	---------



CATEGORY	A	B	C	D	E
LPV DA	227-¾		200	(200-¾)	
LNAV/VNAV DA	379-1 352 (400-1)	390-1 363 (400-1)	398-1 371 (400-1)	409-1½ 382 (400-1½)	
LNAV MDA	500-1 481 (500-1)	473 (500-1)	500-1½ 581 (600-1½)	473 (500-1½)	820-2¾ 781 (800-2¾)
CIRCLING	520-1 481 (500-1)	560-1 521 (600-1)	620-1½ 581 (600-1½)	700-2 661 (700-2)	

HIRL Rwy 6-24 and 14-32  
TDZL/CL Rwy 6

PATUXENT RIVER, MARYLAND

38°17'N - 76°25'W PATUXENT RIVER NAS (TRAPNELL FLD) (KNHK)

Amtrd 4 07AUG25

RNAV (GPS) RWY 14

NE-3, 07 AUG 2025 to 04 SEP 2025

NE-3, 07 AUG 2025 to 04 SEP 2025