

PATUXENT RIVER, MARYLAND

|                                 |                         |  |
|---------------------------------|-------------------------|--|
| TACAN NHK<br>Chan <b>39 (Y)</b> | APCH CRS<br><b>067°</b> | Rwy Idg <b>11,799</b><br>TDZE <b>39</b><br>Arpt Elev <b>39</b> |
|---------------------------------|-------------------------|--|

(USN)

PATUXENT RIVER NAS (TRAPNELL FLD) (KNHK)

**T** \* When ALS inop, increase CAT CDE vis to 1 3/8 miles.

ALSF-1

**MISSED APPROACH:** Climb to 2500 direct NHK TACAN and intercept NHK R-053 to SPRIG and hold.

ATIS  
322.425

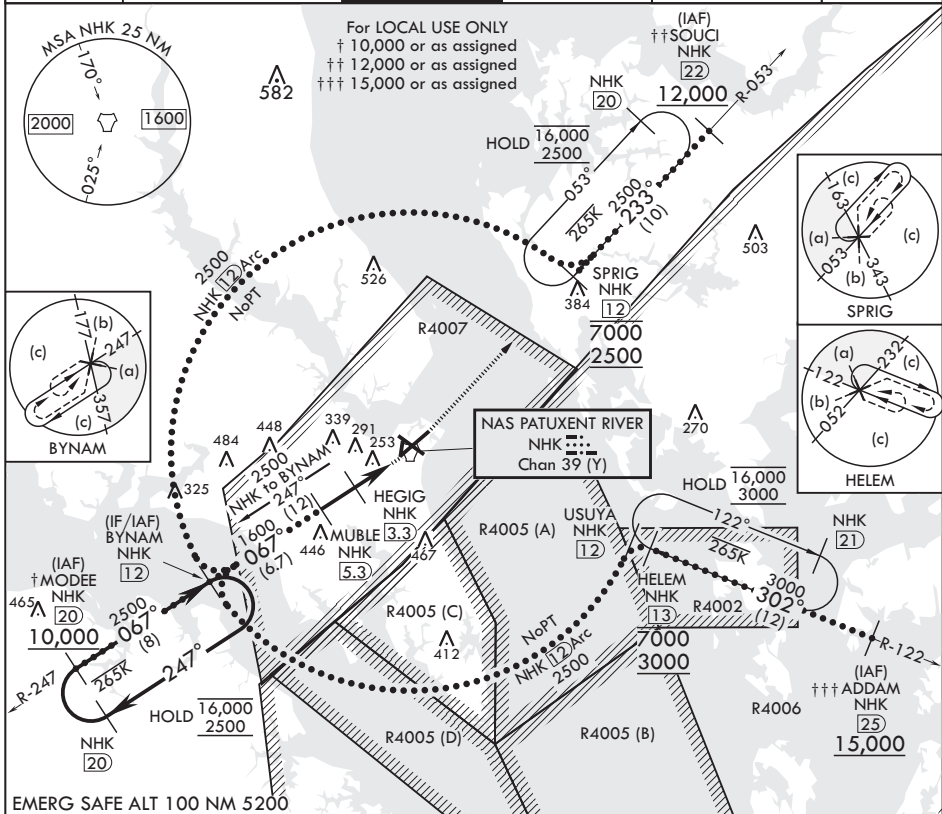
APP CON/DEP CON★  
121 0 250 3

TOWER

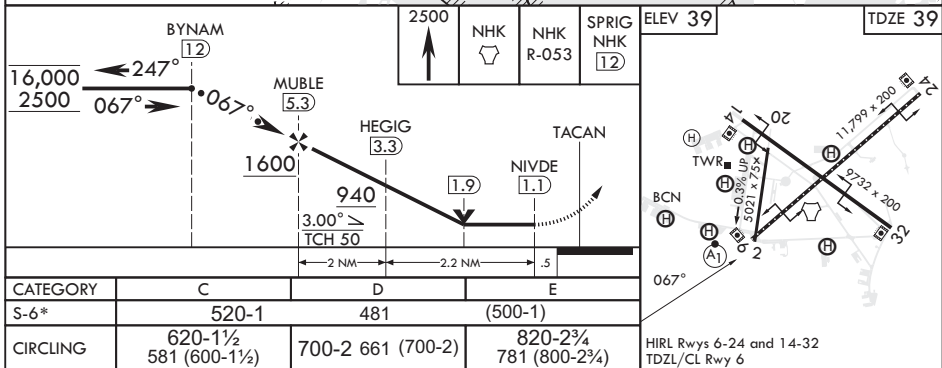
|         |       |
|---------|-------|
| GND CON |       |
| 120.6   | 336.4 |

CLNC DEL  
135.2 316.12

ASR/PAR



EMERG SAFE ALT 100 NM 5200



PATUXENT RIVER, MARYLAND

38°17'N - 76°25'W PATUXENT RIVER NAS (TRAPNELL FLD) (KNHK)

Amdt 1 07AUG25

# HI-TACAN Y RWY 6

NE-3, 07 AUG 2025 to 04 SEP 2025

NE-3, 07 AUG 2025 to 04 SEP 2025