

HI-TACAN Y RWY 24

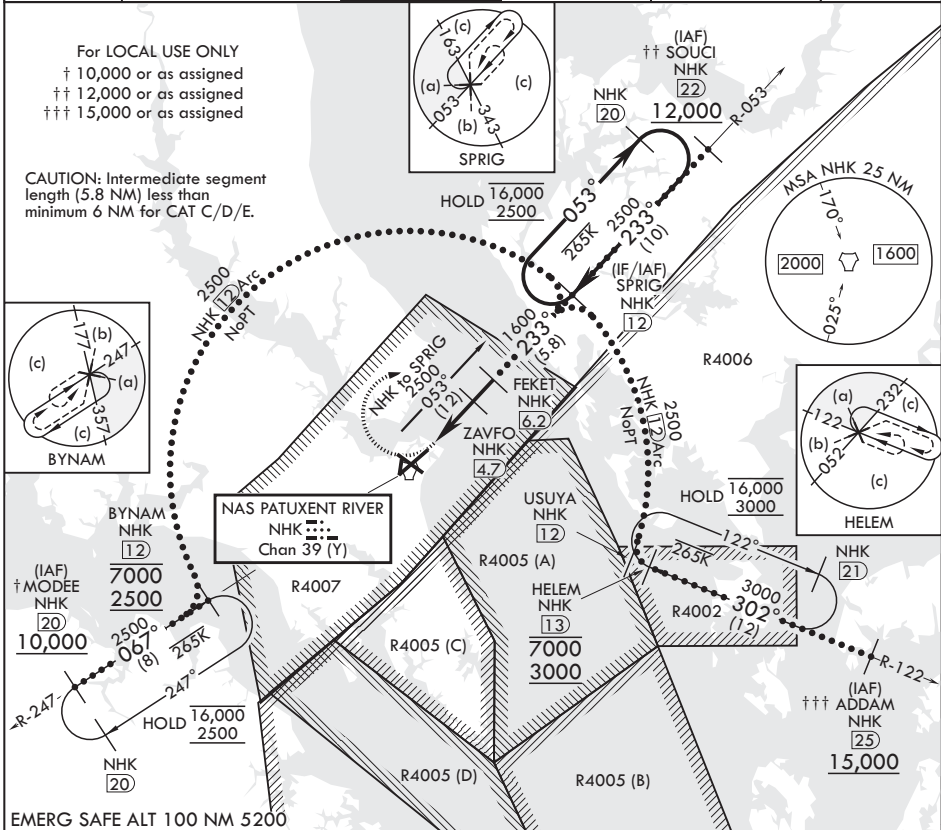
TACAN NHK Chan 39 (Y)	APCH CRS 233°	Rwy ldg TDZE 11,799 20 Arpt Elev 39
--------------------------	------------------	--

(USN)

PATUXENT RIVER NAS (TRAPNELL FLD) (KNHK)

MISSED APPROACH: Climbing right turn to 2500 and intercept NHK TACAN R-053 to SPRIG and hold.

ATIS 322.425	APP CON/DEP CON* 121.0 250.3	TOWER 123.7 343.65	GND CON 120.6 336.4	CLNC DEL 135.2 316.125	ASR/PAR
-----------------	---------------------------------	-----------------------	------------------------	---------------------------	---------



2500 NHK R-053	SPRIG NHK 12	SPRIG 12	ELEV 39	TDZE 20
TACAN	ZOSAX 1.9	ZAVFO 4.7	FEKET 6.2	1600
1120	1600	1600	1600	1600
2.8 NM	1.5 NM	1.5 NM	1.5 NM	1.5 NM
CATEGORY	C	D	E	
S-24	440-1 1/8	420	(500-1 1/4)	
CIRCLING	620-1 1/2 581 (600-1 1/2)	700-2 661 (700-2)	820-2 3/4 781 (800-2 3/4)	

HI-TACAN Y RWY 24