

PANAMA CITY, FLORIDA

RNAV (GPS) RWY 32R

WAAS CH 52209 W32A	APCH CRS 319°	Rwy ldg TDZE Arpt Elev	10,008 14 17
--------------------------	------------------	------------------------------	--------------------

- (USAF)

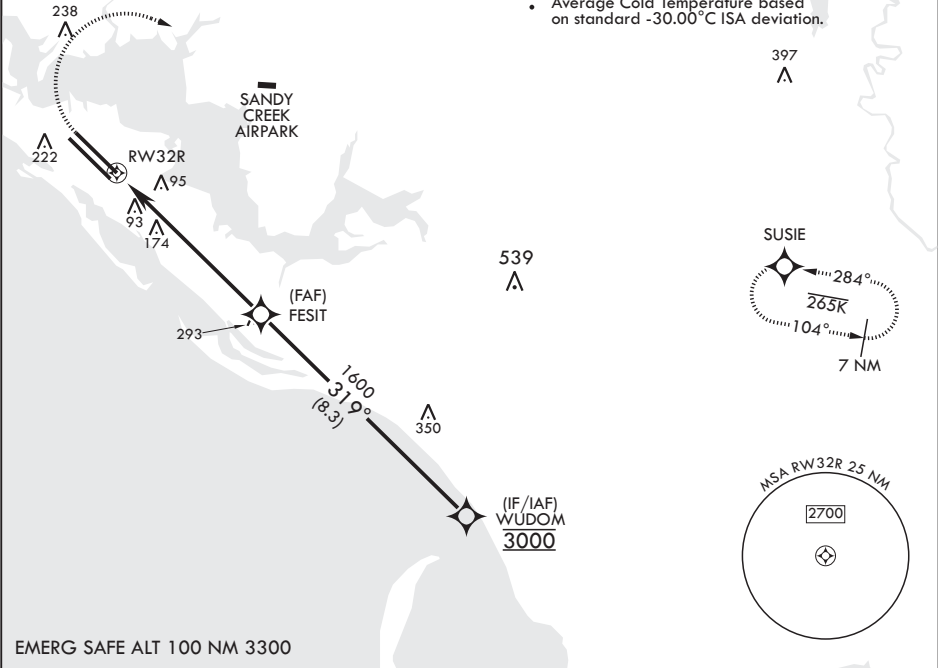
TYNDALL AFB (KPAM)

RNP APCH	ALSF-1	MISSED APPROACH: Climb to 600 then climbing right turn to 3000 direct SUSIE and hold.
* When ALS inop increase RVR to 40, vis to 3/4 mile. ** When ALS inop increase RVR to 55, vis to 1 mile.		

ATIS★ 254.4	APP CON/DEP CON 119.775 317.45 BLW 5000' 124.15 338.35 ABV 5000'	TOWER★ 133.95 263.15	GND CON 121.9 259.3	CLNC DEL 118.05 348.7	ASR/PAR
----------------	--	-------------------------	------------------------	--------------------------	---------

*** When ALS inop increase CAT AB RVR to 55, vis to 1 mile, CAT CDE vis to 1 3/8 miles.

For uncompensated Baro-VNAV systems, Procedure NA below 15°C (59°F) or above 54°C (130°F).
Average Cold Temperature based on standard -30.00°C ISA deviation.



600

crs 318°

3000

SUSIE

WUDOM

3000

ELEV 17

TDZE 14

RWY 32R

1.6 NM to RWY 32R

5.8 NM

FESIT

1600

GP 2.50°

TCH 50

Rwy 32L Idg 9135'

BCN 173

TWR 148

10,008 ± 200

10,113 ± 150

32L

32R

CATEGORY	A	B	C	D	E
LPV DA*	214/24		200	(200-½)	
LNAV/VNAV DA**	362/30		348	(400-¾)	
LNAV MDA***	480/24 466 (500-½)		480/50	466	(500-1)
CIRCLING	540-1 523 (600-1)		540-1½ 523 (600-½)	580-2 563 (600-2)	620-2¼ 603 (700-2¼)

HIRL all Rwys

Recommend Rwy 14L-32R for

apch end engagement of A-Gear

PANAMA CITY, FLORIDA

30°04'N - 85°34'W

TYNDALL AFB (KPAM)

Amdt 3 22APR21

RNAV (GPS) RWY 32R

SE-3, 07 AUG 2025 to 04 SEP 2025

SE-3, 07 AUG 2025 to 04 SEP 2025