

PANAMA CITY, FLORIDA

RNAV (GPS) RWY 32L

WAAS CH 71279 W32B	APCH CRS 319°	Rwy Idg 9135 TDZE 17 Arpt Elev 17
--------------------------	------------------	---

- (USAF)

TYNDALL AFB (KPAM)

RNP APCH

MISSED APPROACH: Climb to 600 then climbing right turn to 3000 direct SUSIE and hold.

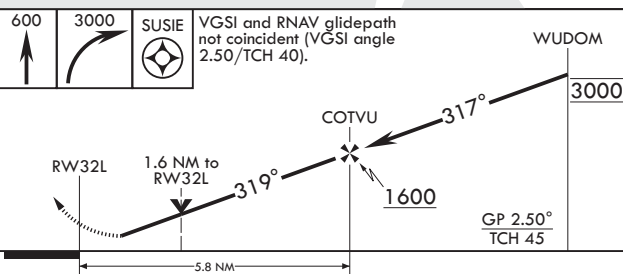
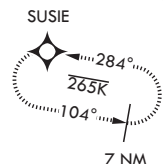
ATIS★ 254.4	APP CON/DEP CON 119.775 317.45 BLW 5000' 124.15 338.35 ABV 5000'	TOWER★ 133.95 263.15	GND CON 121.9 259.3	CLNC DEL 118.05 348.7	ASR/PAR
----------------	--	-------------------------	------------------------	--------------------------	---------


For uncompensated Baro-VNAV systems, Procedure NA below 16°C (61°F) or above 54°C (130°F).
Average Cold Temperature based on standard -30.00°C ISA deviation.

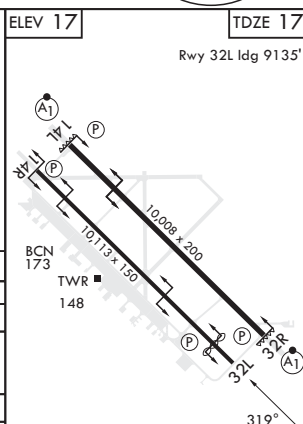
115



EMERG SAFE ALT 100 NM 3300



CATEGORY	A	B	C	D	E
LPV DA	217-¾		200	(200-¾)	
LNAV/VNAV DA	291-⅞ 274 (300-⅞)	302-⅞ 285 (300-⅞)	310-⅞ 293 (300-⅞)	321-⅞ 304 (400-⅞)	
LNAV MDA	480-1	463 (500-1)	480-1⅓	463	(500-1⅓)
 CIRCLING	540-1	523 (600-1)	540-1½ 523 (600-1½)	580-2 563 (600-2)	620-2¼ 603 (700-2¼)



HIRL all Rwys
Recommend Rwy 14L-32R for
apch end engagement of A-Gear.

PANAMA CITY, FLORIDA

30°04'N - 85°34'W

TYNDALL AFB (KPAM)

Amdt 3 22APR21

RNAV (GPS) RWY 32L

SE-3, 07 AUG 2025 to 04 SEP 2025

SE-3, 07 AUG 2025 to 04 SEP 2025