

ILS or LOC Z RWY 32R

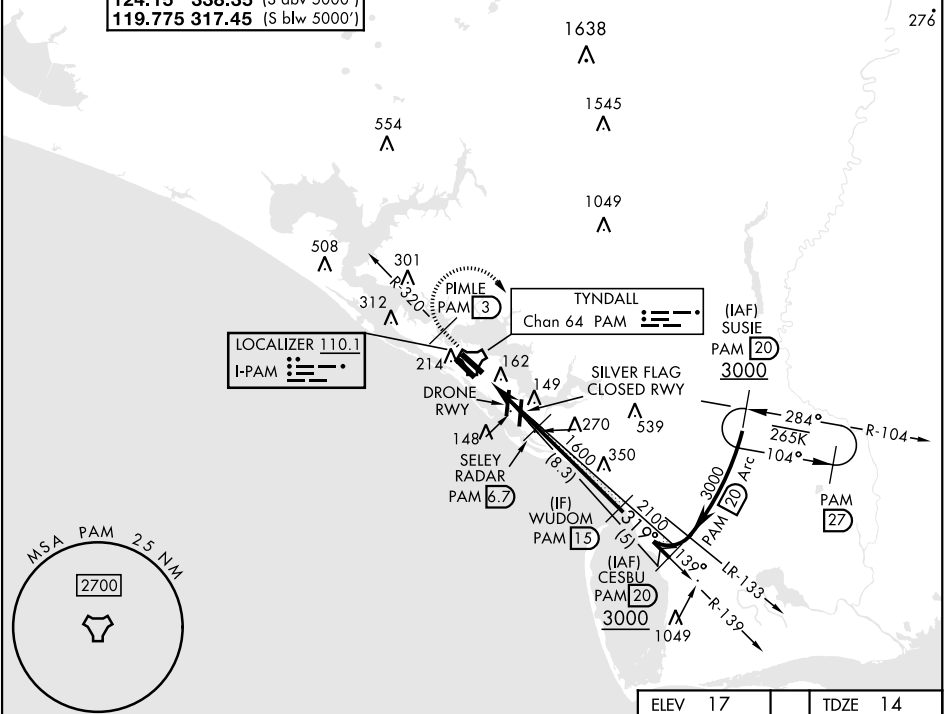
LOC I-PAM 110.1	APCH CRS 319°	Rwy Idg 10,008 TDZE 14 Arpt Elev 17
---------------------------	-------------------------	--

[USAF]

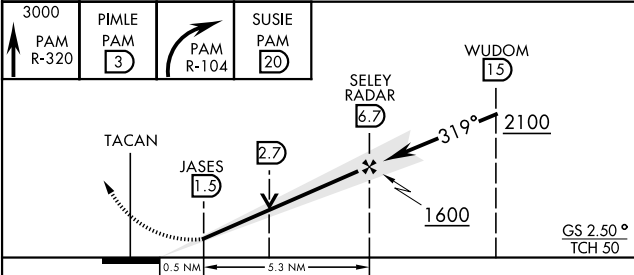
TYNDALL AFB (KPAM)

DME or RADAR required	ALSF-1 	MISSED APPROACH: Track outbound PAM R-320 to 3 DME (PIMLE), then turn right to join PAM R-104 to 20 DME (SUSIE) and hold. Maintain 3000.
* When ALS inop, increase RVR to 40, vis to ¾ mile. ** When ALS inop, increase CAT AB RVR to 55, vis to 1 mile; CAT CDE vis to 1½ miles.		

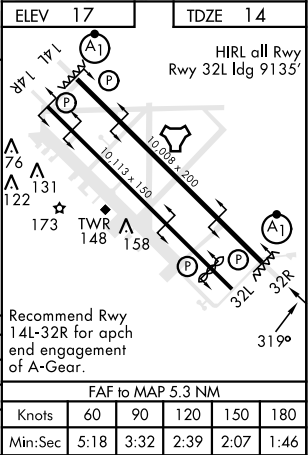
ATIS ★ 254.4	APP CON 125.2 392.1 (N abv 5000') 120.825 379.3 (N blw 5000') 124.15 338.35 (S abv 5000') 119.775 317.45 (S blw 5000')	TOWER ★ 133.95 263.15	GND CON 121.9 259.3	CLNC DEL 118.05 348.7	ASR/PAR
------------------------	--	---------------------------------	-------------------------------	---------------------------------	---------



EMERG SAFE ALT 100 NM 3300



CATEGORY	A	B	C	D	E
S-ILS 32R *	214/24		200	(200-½)	
S-LOC 32R **	540/24	526 (600-½)	540/55 526 (600-1)		
CIRCLING	540-1	523 (600-1)	540-1½ 523 (600-1½)	580-2 563 (600-2)	620-2¼ 603 (700-2¼)



ILS or LOC Z RWY 32R

SE-3, 07 AUG 2025 to 04 SEP 2025

SE-3, 07 AUG 2025 to 04 SEP 2025