

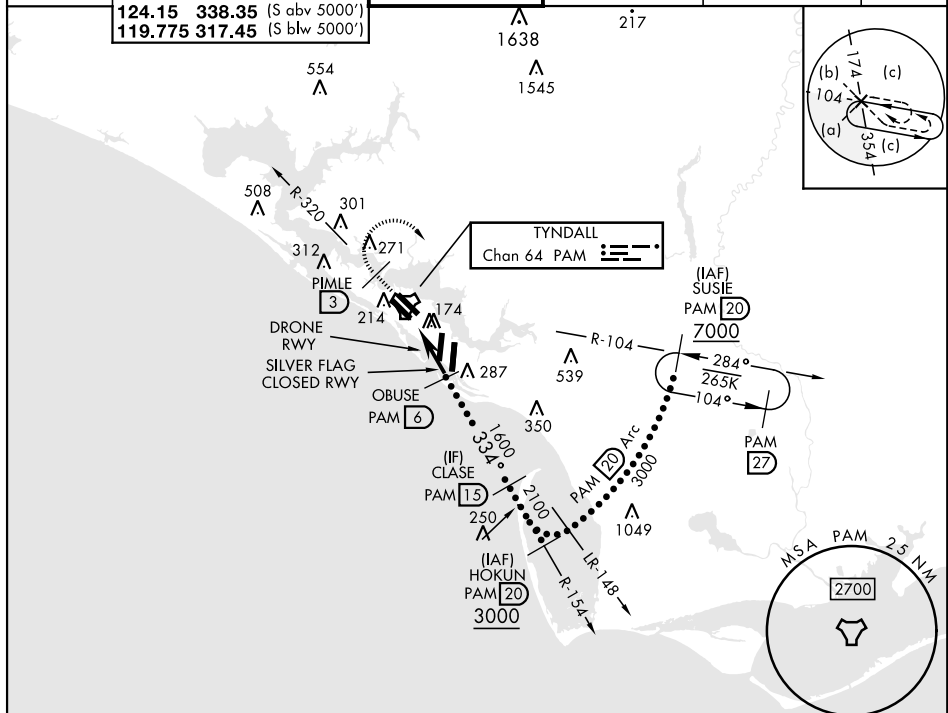
PANAMA CITY, FLORIDA

HI-TACAN Y RWY 32L





TACAN PAM	APCH CRS	Rwy Idg 9135	
Chan 64	334°	TDZE 17	[USAF]
		Arpt Elev 17	TYNDALL AFB (KPAM)

MISSED APPROACH: Track outbound PAM TACAN R-320 to 3 DME (PIMLE), then turn right to join PAM R-104 to 20 DME (SUSIE) and hold. Maintain 3000.

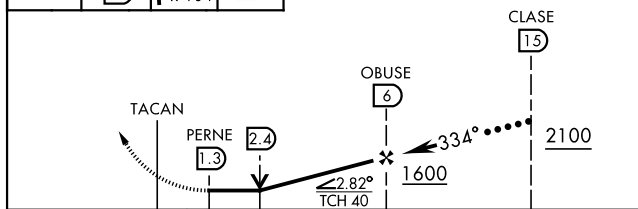
ATIS ★	125.2	392.1	(N abv 5000')	TOWER ★		GND CON		CLNC DEL		ASR/PAR
254.4	120.825	379.3	(N blw 5000')	133.95	263.15	121.9	259.3	118.05	348.7	
	124.15	338.35	(S abv 5000')							
	119.775	317.45	(S blw 5000')							



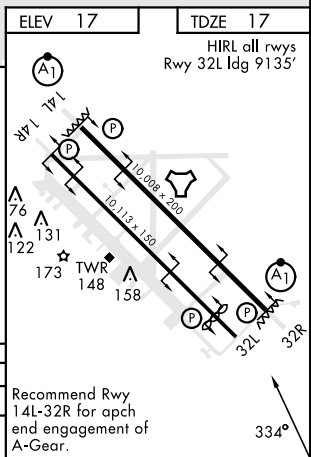
EMERG SAFE ALT 100 NM 3300

 3000 PAM R-320	PIMLE PAM  3	 PAM R-104	SUSIE PAM  20
--	---	--	--

VGSI and descent angles not coincident
(VGSI Angle 2.50/TCH 40).



		0.5	4.7 NM	
CATEGORY	C		D	E
S-32L	480-1 $\frac{3}{8}$		463	(500-1 $\frac{3}{8}$)
CIRCLING	540-1 $\frac{1}{2}$		580-2	
	523 (600-1 $\frac{1}{2}$)		563 (600-2)	
			620-2 $\frac{1}{4}$	
			603 (700-2 $\frac{1}{4}$)	



PANAMA CITY, FLORIDA

30°04'N-85°34'W

TYNDALL AFB (KPAM)

Amdt 5 20MAY21

HI-TACAN Y RWY 32L

SE-3, 07 AUG 2025 to 04 SEP 2025