

HI-TACAN Y RWY 14L

TACAN PAM Chan 64	APCH CRS 130°	Rwy Idg 10,008 TDZE 14 Arpt Elev 17
-----------------------------	-------------------------	--

[USAF]

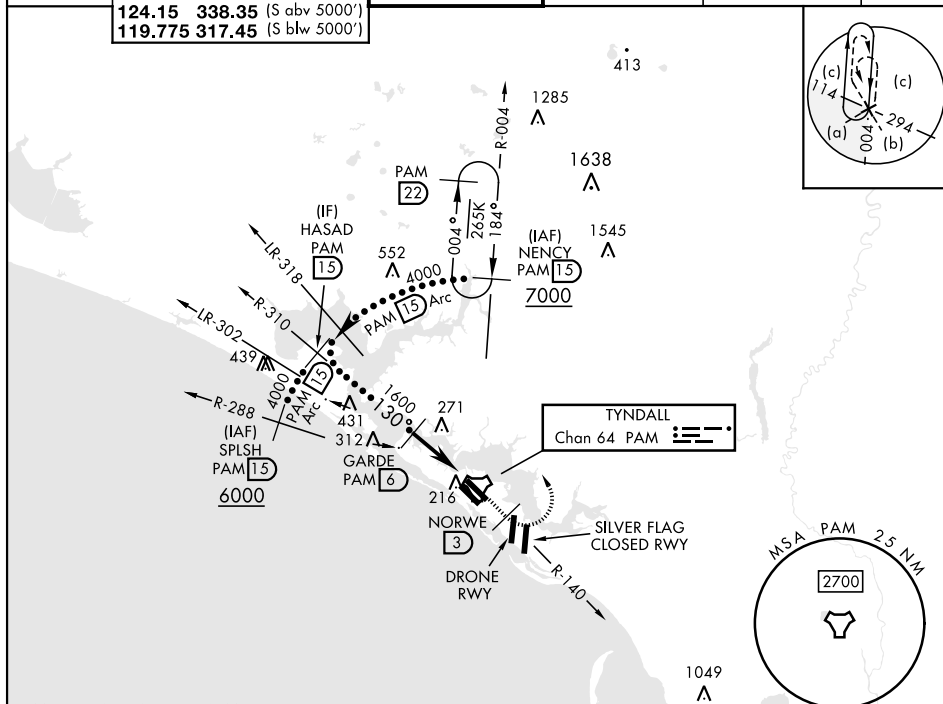
TYNDALL AFB (KPAM)

T * When ALS inop, increase vis to 1 3/8 miles.

ALSF-1

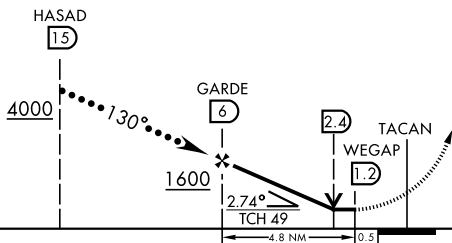
MISSED APPROACH: Track outbound PAM TACAN R-140 to 3 DME (NORWE), then turn left to join PAM R-004 to 15 DME (NENCY) and hold. Maintain 3000.



ATIS ★	125.2	392.1	APP CON (N abv 5000')	TOWER ★		GND CON		CLNC DEL		ASR/PAR
254.4	120.825	379.3	(N blw 5000')	133.95 263.15		121.9 259.3		118.05 348.7		
	124.15	338.35	(S abv 5000')							
	119.775	317.45	(S blw 5000')							



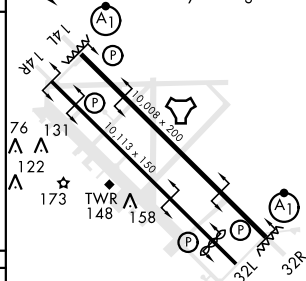
EMERG SAFE ALT 100 NM 3300

VGSI and descent angles
not coincident
(VGSI Angle 2.50/TCH 49).



			
CATEGORY	C	D	E
S-14L*	500/50 486 (500-1)		
 CIRCLING	540-1½ 523 (600-1½)	580-2 563 (600-2)	620-2¼ 603 (700-2¼)

ELEV 17	TDZE 14
130°	HIRL all Rwys Rwy 32L Idg 9135'



Recommend Rwy
14L-32R for apch
end engagement of A-Gear.