

HI-ILS or LOC Y RWY 32R

LOC I-PAM 110.1	APCH CRS 319°	Rwy Idg 10,008 TDZE 14 Arpt Elev 17
---------------------------	-------------------------	--

[USAF]

TYNDALL AFB (KPAM)

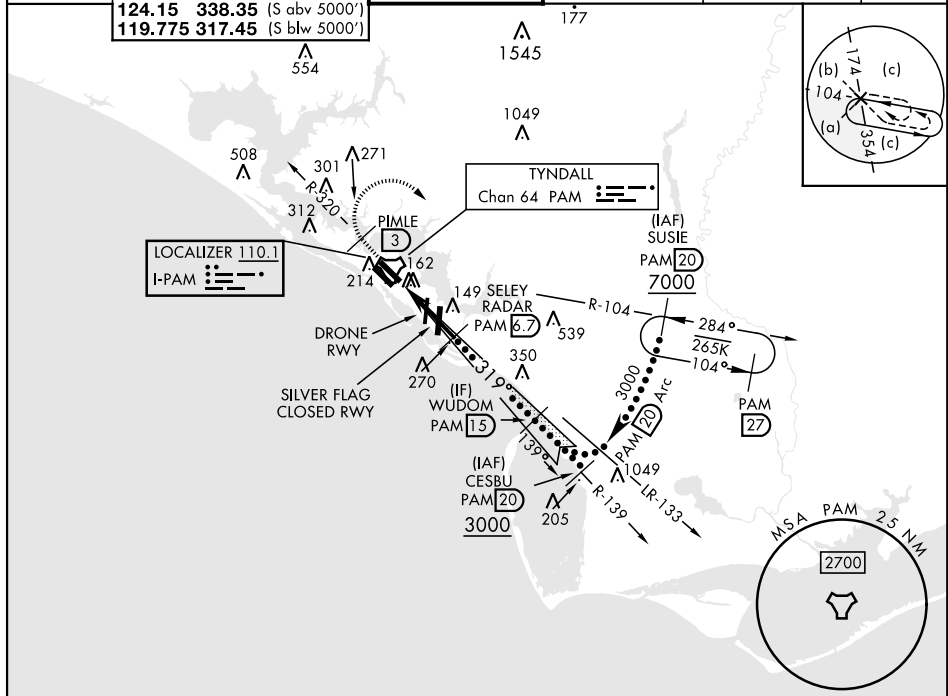
DME or RADAR required.

▼ *When ALS inop, increase RVR to 40, vis to ¾ mile.
**When ALS inop, increase RVR to 60, vis to 1½ miles.

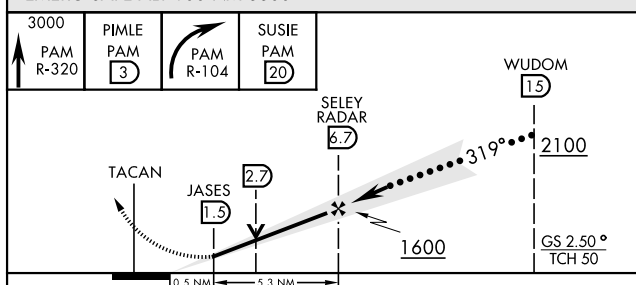


MISSED APPROACH: Track outbound PAM R-320 to 3 DME (PIMLE), then turn right to join PAM TACAN R-104 to 20 DME (SUSIE) and hold. Maintain 3000.

ATIS ★ 254.4	APP CON 125.2 392.1 (N abv 5000') 120.825 379.3 (N blw 5000') 124.15 338.35 (S abv 5000') 119.775 317.45 (S blw 5000')	TOWER ★ 133.95 263.15	GND CON 121.9 259.3	CLNC DEL 118.05 348.7	ASR/PAR
------------------------	--	---------------------------------	-------------------------------	---------------------------------	---------



EMERG SAFE ALT 100 NM 3300



ELEV 17	TDZE 14
HIRL all rwys Rwy 32L Idg 9135'	
Recommend Rwy 14L-32R for apch end engagement of A-Gear.	
FAF to MAP 5.2 NM	
Knots	120 140 160 180 200
Min:Sec	2:36 2:14 1:57 1:44 1:34

HI-ILS or LOC Y RWY 32R