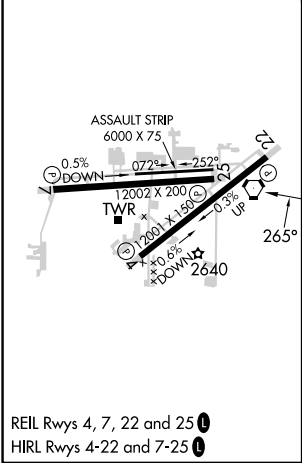
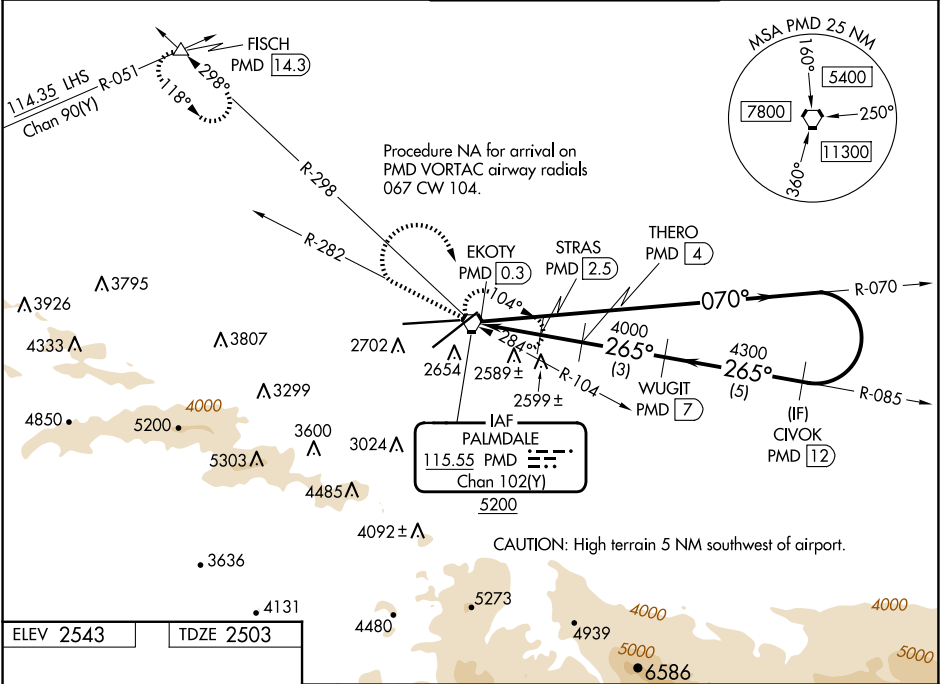



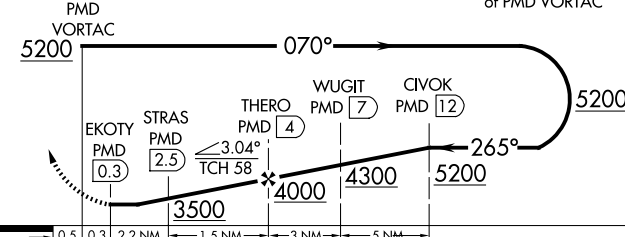

VORTAC PMD	APP CRS	Rwy Ldg	12002
115.55	265°	TDZE	2503
Chan 102 (Y)		Apt Elev	2543

VOR or TACAN Z RWY 25
PALMDALE USAF PLANT 42 (PMD)

DME required.	MISSED APPROACH: Climb to 5000 on PMD VORTAC R-282 then climbing right turn to 7000 direct PMD VORTAC and hold. (TACAN aircraft climbing right turn to 6700 on PMD VORTAC R-298 to FISCH INT/ 14.3 DME and hold SE, left turn, 298° inbound, continue climb-in-hold to 6700).
▼ ▲ Circling NA for Cats C, D, and E south of Rwys 4 and 25.	

ATIS 118.275	JOSHUA APP CON 124.55 363.0	PALMDALE TOWER ★ 123.7 (CTAF) 0 317.6	GND CON 121.9 317.6
-----------------	--------------------------------	--	------------------------



5000 ↑ PMD R-282	7000 ↗	PMD 	VGSI and descent angles not coincident (VGSI Angle 3.00/TCH 76).				
			Remain within 15 NM of PMD VORTAC				
							
CATEGORY	A	B	C	D	E		
S-25	2840-1 337 (300-1)						
 CIRCLING	3020-1 477 (500-1)	3060-1 517 (600-1)	3140-1½ 597 (600-1½)	3740-3 1197 (1200-3)	3760-3 1217 (1300-3)		

SW-3, 07 AUG 2025 to 04 SEP 2025

SW-3, 07 AUG 2025 to 04 SEP 2025