
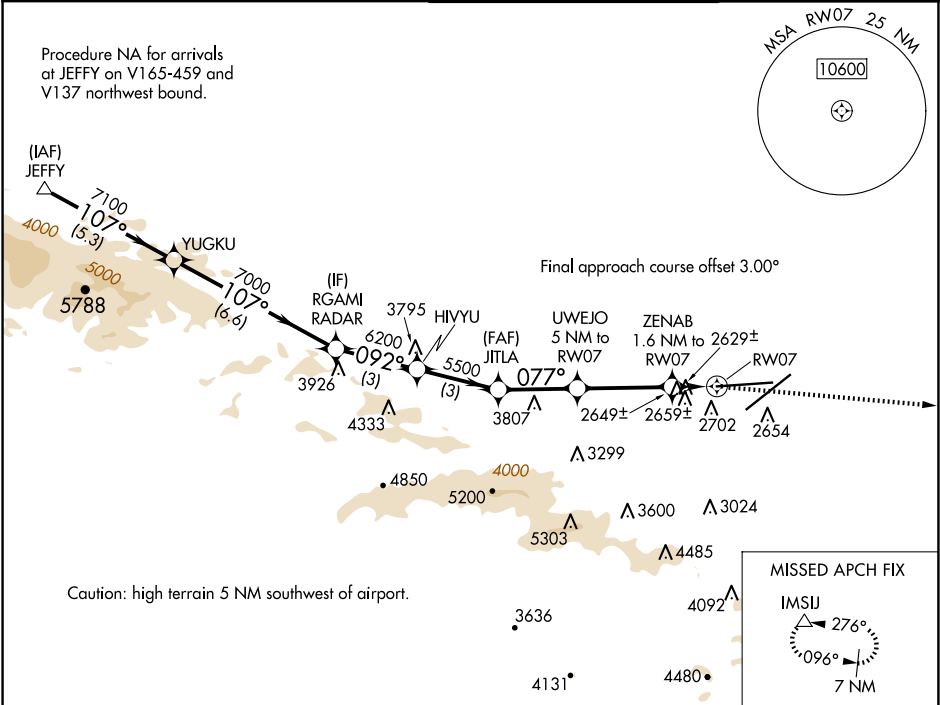


WAAS CH 53441 W07A	APP CRS 077°	Rwy ldg 12002 TDZE 2540 Apt Elev 2543
--	------------------------	--

RNAV (GPS) RWY 7
PALMDALE USAF PLANT 42 (PMD)

RNP APCH.	MISSED APPROACH: Climbing right turn to 7000 direct IMSJ and hold.
 Circling NA for Cats C and D south of Rwy 4 and 25.	

ATIS 118.275	JOSHUA APP CON 124.55 363.0	PALMDALE TOWER ★ 123.7 (CTAF) 0 317.6	GND CON 121.9 317.6
------------------------	---------------------------------------	---	-------------------------------



					ELEV 2543	TDZE 2540
<p>JEFFY YUGKU RGAMI HIVYU JITLA UWEJO ZENAB</p> <p>VGSI and descent angles not coincident (VGSI Angle 3.00/TCH 78).</p> <p>8000 7100 7000 6200 5500 4440 3180</p> <p>107° 092° 077°</p> <p>5.3 NM 6.6 NM 3 NM 3 NM 2.8 NM 3.4 NM 0.8 NM 0.8 NM</p> <p>7000 IMSJ</p> <p>5 NM to RW07 1.6 NM to RW07 0.8 NM to RW07</p> <p>3.50° TCH 50</p> <p>RW07</p>						
CATEGORY	A		B	C	D	
LP MDA			2880-1	340 (400-1)		
LNAV MDA			2920-1	380 (400-1)		
CIRCLING	3020-1 477 (500-1)	3060-1 517 (600-1)	3140-1½ 597 (600-1½)	3740-3 1197 (1200-3)	REIL Rwy's 4, 7, 22 and 25 HIRL Rwy's 4-22 and 7-25	

