

WAAS CH 86520 W25A	APP CRS 254°	Rwy Idg TDZE Apt Elev 12002 2503 2543
--	------------------------	---

RNAV (GPS) RWY 25

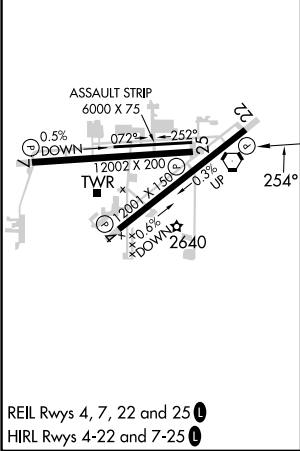
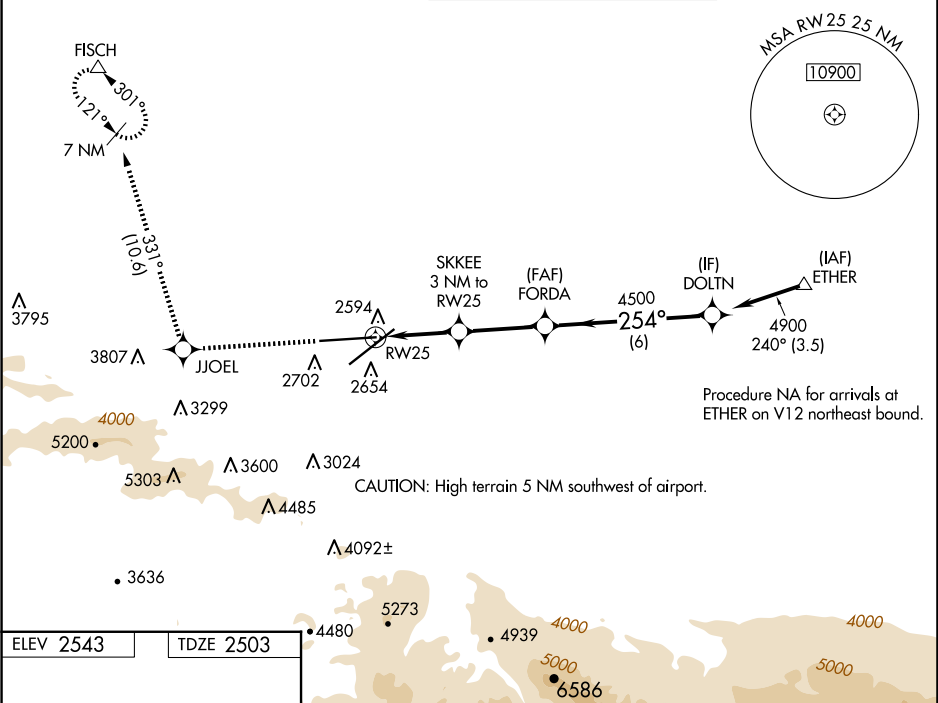
PALMDALE USAF PLANT 42 (PMD)

⚠

For uncompensated Baro-VNAV systems, LNAV/VNAV NA below -6°C (22°F) or above 50°C (123°F). Circling NA for Cats C and D south of Rwy 4 and 25. DME/DME RNP-0.3 NA.

MISSED APPROACH: Climb 6700 direct JJOEL and on track 331° direct FISCH and hold, continue climb-in-hold to 6700.

ATIS 118.275	JOSHUA APP CON 124.55 363.0	PALMDALE TOWER ★ 123.7 (CTAF) 0 317.6	GND CON 121.9 317.6
------------------------	---------------------------------------	---	-------------------------------



6700 JJOEL	tr 331°	FISCH	VGSI and RNAV glidepath not coincident (VGSI Angle 3.00/TCH 76).	
*LNAV only.	SKKEE 3 NM to RWY 25	FORDA	DOLTN	
	*1 NM to RWY 25	4500	4900	
	RWY 25	3500*	4500	GP 3.00° TCH 63
	1 NM	2 NM	3.1 NM	6 NM
CATEGORY	A	B	C	D
LPV DA	2703-3/4 200 (200-3/4)			
LNAV/VNAV DA	2806-1 303 (300-1)			
LNAV MDA	2880-1 377 (400-1)			
CIRCLING	3020-1 477 (500-1)	3060-1 517 (600-1)	3140-1 597 (600-1½)	3740-3 1197 (1200-3)