

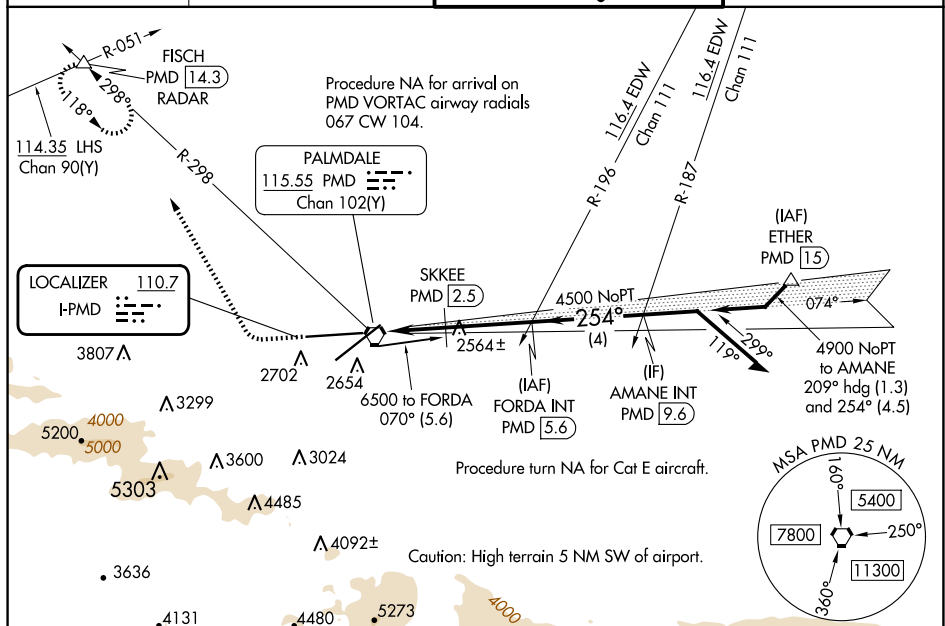
LOC I-PMD <u>110.7</u>	APP CRS 254°	Rwy Ldg 12002 TDZE 2503 Apt Elev 2543
----------------------------------	------------------------	------------------------------------------------------------------

ILS Z or LOC Z RWY 25
PALMDALE USAF PLANT 42 (PMD)

- T** Circling NA for Cats C, D, and E south of Rwy 4 and 25.
A DME from PMD VORTAC. Simultaneous reception of I-PMD and PMD DME required.

MISSED APPROACH: Climb to 3000 then climbing right turn to 6700 on heading 318° and on PMD VORTAC R-298 to FISCH INT/PMD 14.3 DME/RADAR and hold, continue climb-in-hold to 6700.

ATIS 118.275	JOSHUA APP CON 124.55 363.0	PALMDALE TOWER ★ 123.7 (CTAF) 0 317.6	GND CON 121.9 317.6
-----------------	--------------------------------	------------------------------------------	------------------------



ELEV 1043 **TDZE 2503**

VGSJ VORTAC
 3000
 hdg 318°
 PMD R-298
 △

VGSJ ILS
 3.00°
 TCH 76

ASSAULT STRIP
 6000 X 75

TWVR
 12002 X 200
 12001 X 150
 0.5% DOWN
 0.5% UP
 0.5% DOWN
 0.5% UP

SKKEE
 PMD 2.5

FORDA INT
 PMD 5.6

AMANE INT
 PMD 9.6

REIL Rwy 4, 7, 22 and 25
HIRL Rwy 4-22 and 7-25

CATEGORY	A	B	C	D	E
S-ILS 25	2703-3/4 200 (200-3/4)				
S-LOC 25	3500-1 1/4 997 (1000-1 1/4)	3500-1 1/2 997 (1000-1 1/2)	3500-3	997 (1000-3)	
C CIRCLING	3500-1 1/4 957 (1000-1 1/4)	3500-1 1/2 957 (1000-1 1/2)	3500-3 957 (1000-3)	3740-3 1197 (1200-3)	3760-3 1217 (1300-3)
SKKEE FIX MINIMUMS (DME REQUIRED)					
S-LOC 25	2820-1 317 (300-1)		2820-7/8 317 (300-7/8)		
C CIRCLING	3020-1 477 (500-1)	3060-1 517 (600-1)	3140-1 1/2 597 (600-1 1/2)	3740-3 1197 (1200-3)	3760-3 1217 (1300-3)