

HI-TACAN Y RWY 25

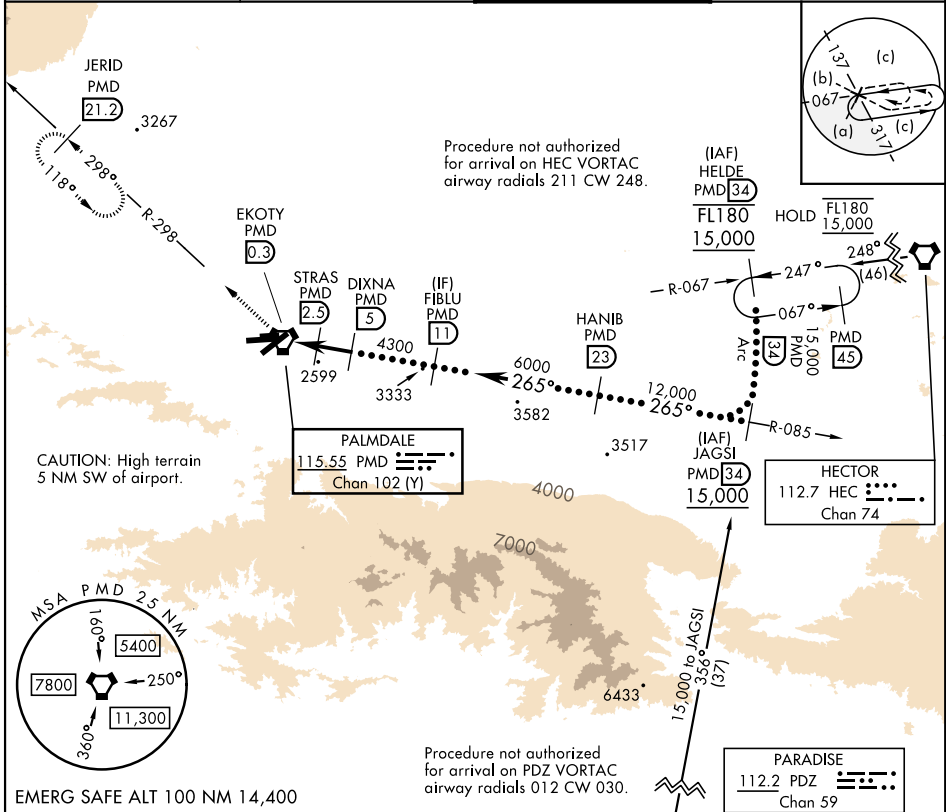
TACAN PMD Chan 102 (Y)	APCH CRS 265°	Rwy Idg 12,002 TDZE 2503 Arpt Elev 2543
----------------------------------	-------------------------	--

[USAF]

PALMDALE USAF PLANT 42 (KPMDD)

<p>▼ * Circling not authorized S of Rwy 4 and 25.</p> <p>▲</p>	MISSED APPROACH: Climb to 3000 then climbing right turn to 6000 on heading 318° and on PMD VORTAC R-298 to JERID INT/PMD 21.2 DME and hold.
--	---

ATIS 118.275	JOSHUA APP CON 124.55 363.0	TOWER ★ 123.7 (CTAF) 0 317.6	GND CON 121.9 317.6
------------------------	---------------------------------------	--	-------------------------------



EMERG SAFE ALT 100 NM 14,400			
3000 6000 VGSI and descent angles not coincident.			
PMD VORTAC STRAS PMD 2.3 DIXNA PMD 5 FIBLU PMD 11			
0.8 2.2 NM 2.5 NM			
CATEGORY	C	D	E
S-25	2860-1	357 (400-1)	
CIRCLING*	3140-1½ 597 (600-1½)	3760-3 1217 (1300-3)	

ELEV	2543	TDZE	2503
ASSAULT STRIP			
072° 252° 0.3% UP 6,000 x 75 0.4% UP 12,002 x 200 265°			
HIRL Rwy 4-22, 7-25 0 REIL Rwy 4, 22, 7, 25 0			

HI-TACAN Y RWY 25

SW-3, 07 AUG 2025 to 04 SEP 2025

SW-3, 07 AUG 2025 to 04 SEP 2025