

HI-ILS Y or LOC Y RWY 25

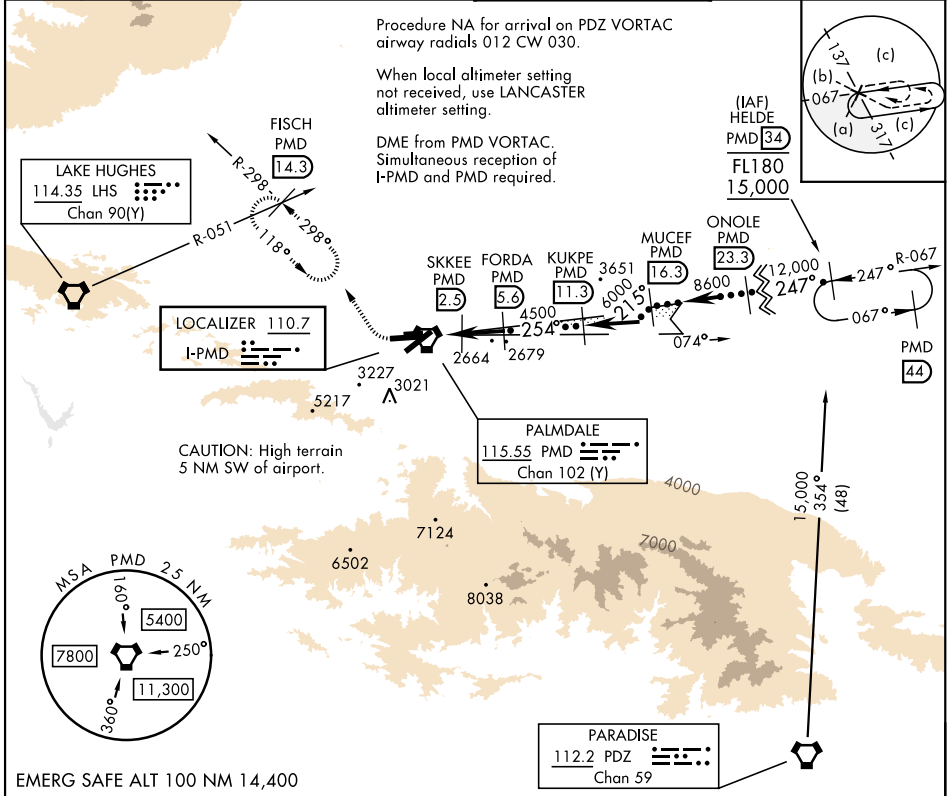
LOC I-PMD 110.7	APCH CRS 254°	Rwy Idg 12,002 TDZE 2503 Arpt Elev 2543
---------------------------	-------------------------	--

[USAF]

PALMDALE USAF PLANT 42 (KPMD)

DME required	MISSED APPROACH: Climb to 3000 then climbing right turn on heading 318° and PMD VORTAC R-298 to FISCH INT/PMD 14.3 DME/RADAR and hold, continue climb-in-hold to 6700.
⚠ *Circling not authorized S of Rwy 4 and 25.	

ATIS 118.275	JOSHUA APP CON 124.55 363.0	TOWER★ 123.7 (CTAF) 317.6	GND CON 121.9 317.6
------------------------	---------------------------------------	-------------------------------------	-------------------------------



<div>3000</div> <div>6700</div> <div>↑</div> <div>hdg 318°</div> <div>PMD R-298</div>	<div>PMD</div> <div>R-298</div>	<div>KUKPE PMD</div> <div>11.3</div>	<div>MUCEF PMD</div> <div>16.3</div>	<div>ONOLE PMD</div> <div>23.3</div>	<div>HELDE PMD</div> <div>34</div>	<div>ELEV</div> <div>2543</div>	<div>TDZE</div> <div>2503</div>
VGSI and descent angles not coincident.	<div>PMD</div> <div>0.3</div>	<div>SKKEE PMD</div> <div>2.5</div>	<div>FORDA PMD</div> <div>5.6</div>	<div>FL180</div> <div>15,000</div>	<div>GS 3.00°</div> <div>TCH 63</div>	<div>ASSAULT STRIP</div> <div>072°</div> <div>252°</div> <div>0.3% UP</div> <div>6,000 x 75</div> <div>12,002 x 200</div> <div>2001 x 150</div> <div>TWR</div> <div>2626</div> <div>2640</div> <div>2699</div>	
CATEGORY	C	D	E				
S-ILS 25	2703-¾	200 (200-¾)		HIRL Rwy 4-22, 7-25			
S-LOC 25	2820-7/8	317 (300-¾)		REIL Rwy 4, 22, 7, 25			
CIRCLING*	3140-1½ 597 (600-1½)	3740-3 1197 (1200-3)	3760-3 1217 (1300-3)	FAF to MAP 6.1 NM			
	Knots	60	90	120	150	180	
	Min:Sec	6:06	4:04	3:03	2:26	2:02	

HI-ILS Y or LOC Y RWY 25