

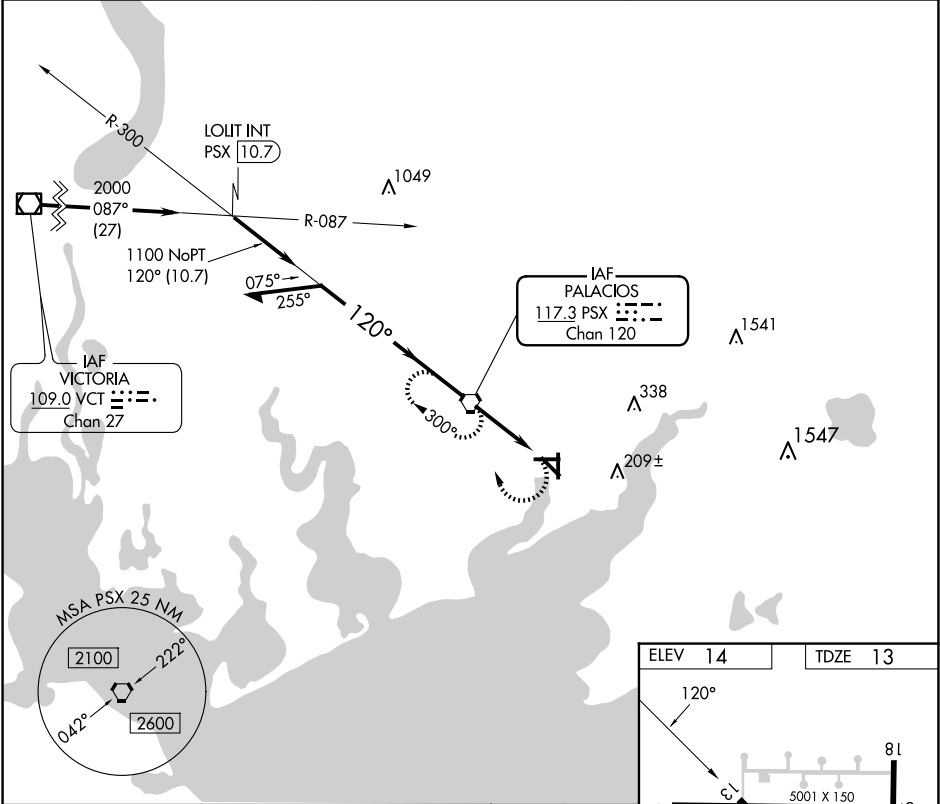
⚠

When local altimeter setting not received, use Port Lavaca altimeter setting:
increase all MDA's 60 feet and S-13 Cat C/D and Circling Cat C/D
visibility ¼ SM. Rwy 13 helicopter visibility reduction below ¾ SM NA.
Circling Rwy 8, 18, 26, 31, 36 NA at night.

MISSED APPROACH:

Climbing right turn
to 2000 direct PSX VORTAC and hold.

ASOS 118.025	HOUSTON CENTER 135.05 353.6	UNICOM 122.8 (CTAF) 0
-----------------	--------------------------------	--------------------------



Remain within 10 NM

PSX VORTAC

2000

300°

120°

1100

3.02° TCH 40

PSX 2.1

PSX 3.3

2.1 NM

1.2 NM

ELEV 14

TDZE 13

120°

81

26

36

5001 X 150

5001 X 150

5001 X 75

REIL Rwy 13 and 31

MIRL Rwy 13-31 0

FAF to MAP 3.3 NM

Knots	60	90	120	150	180
Min:Sec	3:18	2:12	1:39	1:19	1:06