

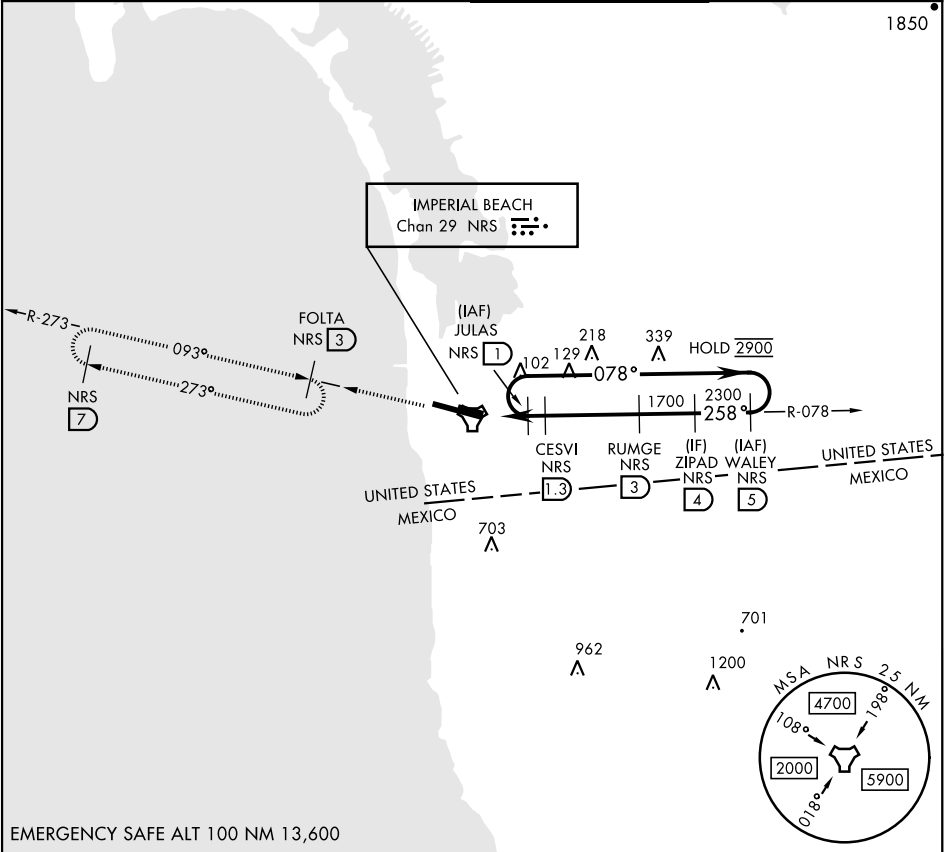
COPTER TACAN RWY 27

TACAN NRS Chan <b>29</b>	APCH CRS <b>258°</b>	Rwy Idg <b>4998</b> THRE <b>20</b> Arpt Elev <b>23</b>
--------------------------	----------------------	--

AL-307 [USN]

IMPERIAL BEACH NOLF (REAM FIELD) (KNRS)

RADAR required.		MISSED APPROACH: Climb to 1800 on NRS TACAN R-078 to NRS, and R-273 to FOLTA. Continue climb in hold to 1800.	
▼ Max airspeed 90 KIAS.			
ATIS ★ /ASOS <b>276.2</b>	SOCAL APP CON <b>125.15 317.55</b>	IMPERIAL BEACH TOWER ★ <b>120.65 239.25</b>	GND CON <b>285.575</b>



EMERGENCY SAFE ALT 100 NM 13,600

JULAS 1 078° → 2900

← 258°

TACAN CISAV 0.5 CESVI 1.3 RUMGE 3 ZIPAD 4 WALEY 5

1700 2300 2900

0.8 NM 1.7 NM

VDA RUMGE to thld 5.35° TCH 50

1800 NRS R-078

NRS R-273

ELEV 23

THRE 20

2241 x 151 TWR

27 26

258°

CATEGORY	COPTER		
H-27	400-½	377	(400-½)

HIRL Rwy 9-27

COPTER TACAN RWY 27

SW-3, 07 AUG 2025 to 04 SEP 2025

SW-3, 07 AUG 2025 to 04 SEP 2025