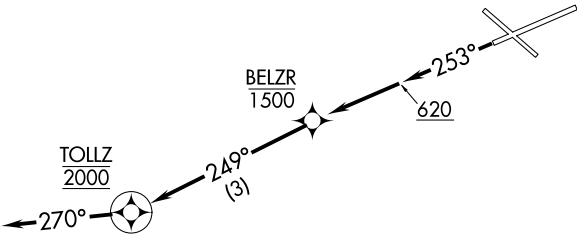
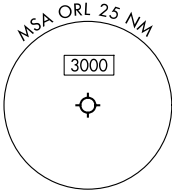


ORLANDO DEP CON 119.775 351.9 ATIS 127.25 CLNC DEL 128.45 CLNC DEL 125.225 (When twr closed) GND CON 121.4 239.0 EXECUTIVE TOWER ★ 118.7 239.0	RNAV 1 - DME/DME/IRU or GPS required.	TOP ALTITUDE: 2000
	RADAR required.	



TAKEOFF MINIMUMS  
Rwy 25: Standard with minimum climb of 500' per NM to 620.



NOTE: Chart not to scale.



DEPARTURE ROUTE DESCRIPTION

TAKEOFF RUNWAY 25: Climb on heading 253° to 620, then direct to cross BELZR at or below 1500, then on track 249° to cross TOLLZ at 2000, thence. . . .

. . . on heading 270°, maintain 2000. Expect clearance to filed altitude within 10 minutes after departure.