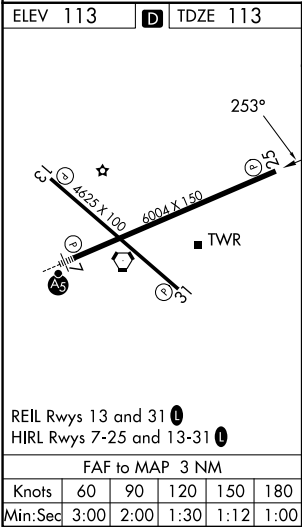
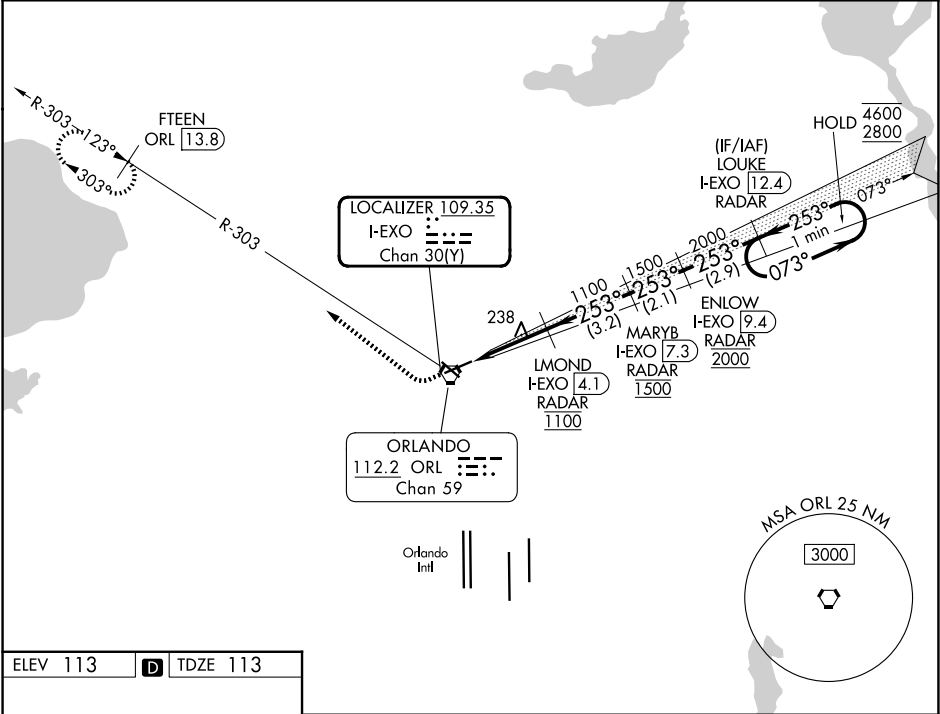


LOC/DME I-EXO 109.35 Chan 30(Y)	APP CRS 253°	Rwy Ldg TDZE 113 Apt Elev 113
---	------------------------	---

ILS or LOC RWY 25
ORLANDO EXEC (ORL)

DME or RADAR required.				MISSED APPROACH: Climb to 600 then climbing right turn to 1700 on heading 315° and on ORL VORTAC R-303 to FTEEN/ORL 13.8 DME and hold.		
⚠ Circling Rwy 31 NA at night. In minimum visibility conditions, bright lights on highway ½ mile south of airport may be mistaken for runway lights.						
ATIS 127.25	ORLANDO APP CON 124.8 351.9	EXECUTIVE TOWER ★ 118.7 (CTAF) 0 239.0	GND CON 121.4 239.0	CLNC DEL 128.45	CLNC DEL 125.225 (When twr closed)	UNICOM 122.95



600 ↑		1700 hdg 315°		ORL R-303		FTEEN ORL 13.8		One Minute Holding Pattern	
I-EXO 1.2		I-EXO 2.2		L Mond I-EXO 4.1 RADAR		MARYB I-EXO 7.3 RADAR		ENLOW I-EXO 9.4 RADAR	
1.1 NM		1.9 NM		3.2 NM		2.1		2.9 NM	
CATEGORY		A		B		C		D	
S-ILS 25		313-¾		200 (200-¾)					
S-LOC 25		500-1		387 (400-1)		500-1½		387 (400-1½)	
CIRCLING		580-1 467 (500-1)		680-1 567 (600-1)		860-2¼ 747 (800-2¼)		860-2½ 747 (800-2½)	

SE-3, 07 AUG 2025 to 04 SEP 2025

SE-3, 07 AUG 2025 to 04 SEP 2025