

OMAHA, NEBRASKA

AL-304 (FAA)

25163

WAAS CH <b>60917</b> <b>W32A</b>	APP CRS <b>322°</b>	Rwy Ldg <b>9502</b> TDZE <b>981</b> Apt Elev <b>985</b>
--	------------------------	---

## RNAV (GPS) Y RWY 32L

FPPIFY AIRFIELD (OMA)

RNP APCH.



For uncompensated Baro-VNAV systems, LNAV/VNAV NA below -19°C (-2°F) or above 54°C (130°F).  
#RVR 1800 authorized with use of FD or AP or HUD to DA.

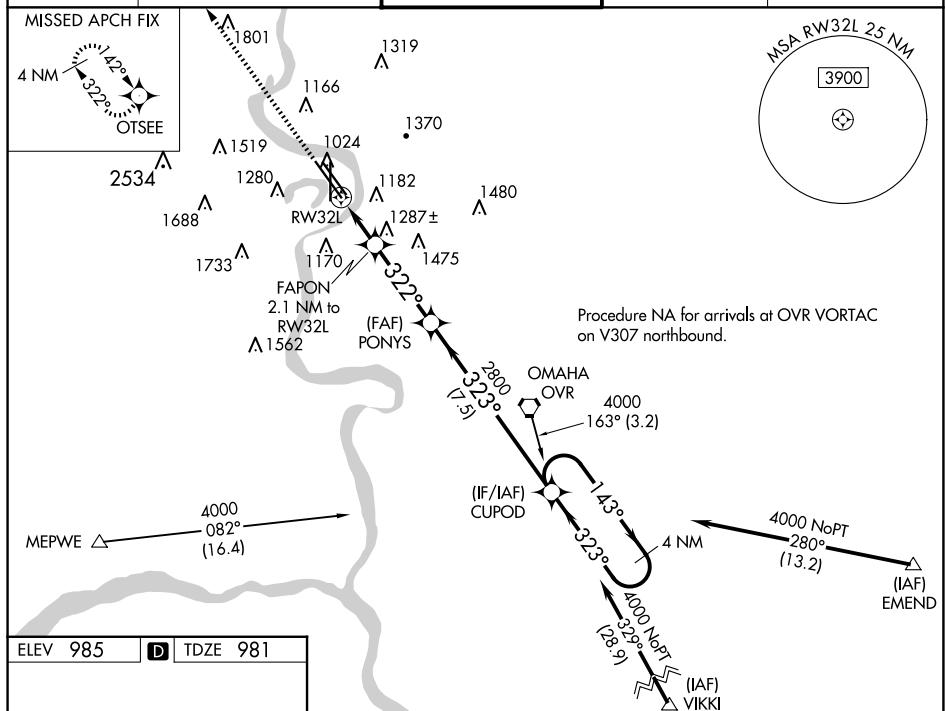
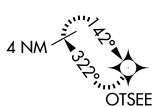
MALSR



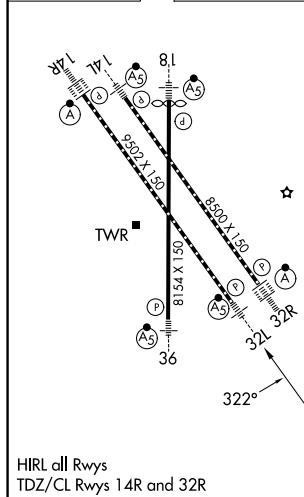
**MISSED APPROACH:** Climb to 3300 direct OTSEE and hold, continue climb-in-hold to 3300.

D-ATIS <b>120.4</b>	OMAHA APP CON <b>135.875 354.05</b>	OMAHA TOWER <b>132.1 256.9</b>	GND CON <b>121.9</b>	CLNC DEL <b>119.9</b>
------------------------	--	-----------------------------------	-------------------------	--------------------------

MISSED APCH FIX



ELEV 985	<b>D</b>	TDZE 981
----------	----------	----------



<div><div><div>3300</div><div>↑</div></div><div><div>OTSEE</div><div></div></div></div> <div><div><div>*LNAV only</div><div></div></div></div>					CUPOD					4 NM Holding Pattern																			
*LNAV only					*1.6 NM to RW32L					FAPON 2.1 NM to RW32L					PONYS 2800					CUPOD					4000				
RW32L					322°					323°					143°					323°					GP 3.00° TCH 52				
1.6 NM					0.5 NM					3.5 NM					7.5 NM														
CATEGORY					A					B					C					D									
LPV DA#					1181/24					200 (200-½)																			
LNAV/ VNAV DA					1572-1¼					591 (600-1¼)																			
LNAV MDA					1540/24 559 (600-½)					1540/60 559 (600-1¼)																			
CIRCLING					1660-1 675 (700-1)					1680-1 695 (700-1)					2000-3 1015 (1100-3)					2040-3 1055 (1100-3)									

OMAHA, NEBRASKA

Amdt 2 24MAY18

EPPLEY AIRFIELD (OMA)

41°18'N-95°54'W

RNAV (GPS) Y RWY 32L

NC-2, 07 AUG 2025 to 04 SEP 2025

NC-2, 07 AUG 2025 to 04 SEP 2025