

APP CRS	Rwy Ldg	9502
322°	TDZE	981
	Apt Elev	985

RNAV (RNP) Z RWY 32L

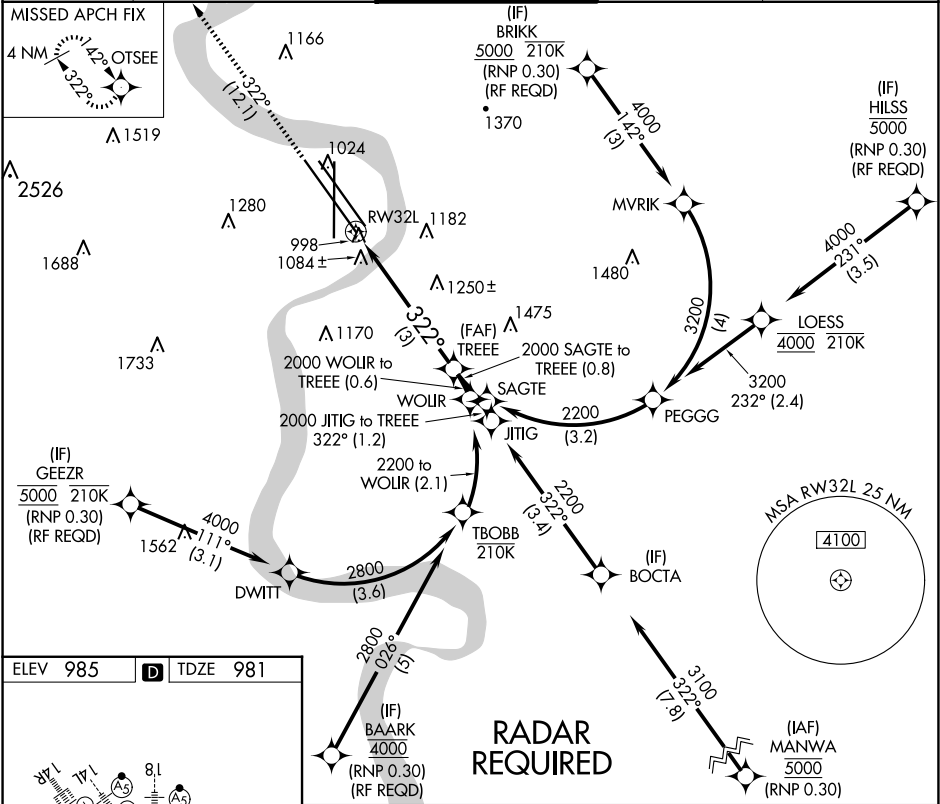
EPPLEY AIRFIELD (OMA)

For uncompensated Baro-VNAV systems, procedure NA below -19°C (-2°F) or above 54°C (130°F). When VGSI inop, procedure NA at night.
For inoperative ALS, increase RNP 0.15 all Cats visibility to 1¼ SM and RNP 0.30 all Cats visibility to 2¼ SM. GPS required.

MALSR

MISSED APPROACH:
Climb to 3300 on track 322° to OTSEE and hold.

D-ATIS	OMAHA APP CON	OMAHA TOWER	GND CON	CLNC DEL
120.4	135.875 354.05	132.1 256.9	121.9	119.9



ELEV 985	TDZE 981	RADAR REQUIRED			
		VGSI and RNAV glidepath not coincident (VGSI Angle 3.00/TCH 51).			
3300 tr 322°		TREE 2000			
RW32L		322°			
See planview for multiple IF locations.		GP 3.00° TCH 57			
3 NM					
CATEGORY	A	B	C	D	
RNP 0.15 DA		1359/50	378 (400-1)		
RNP 0.30 DA		1624-1¾	643 (700-1¾)		
AUTHORIZATION REQUIRED					