

OLATHE, KANSAS

AL-302 (FAA)

21112

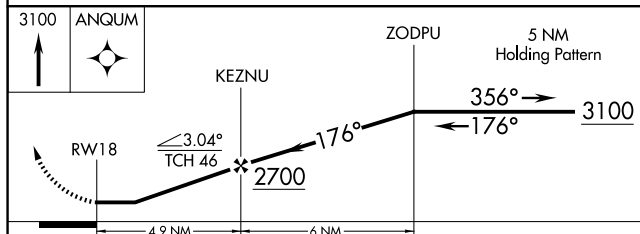
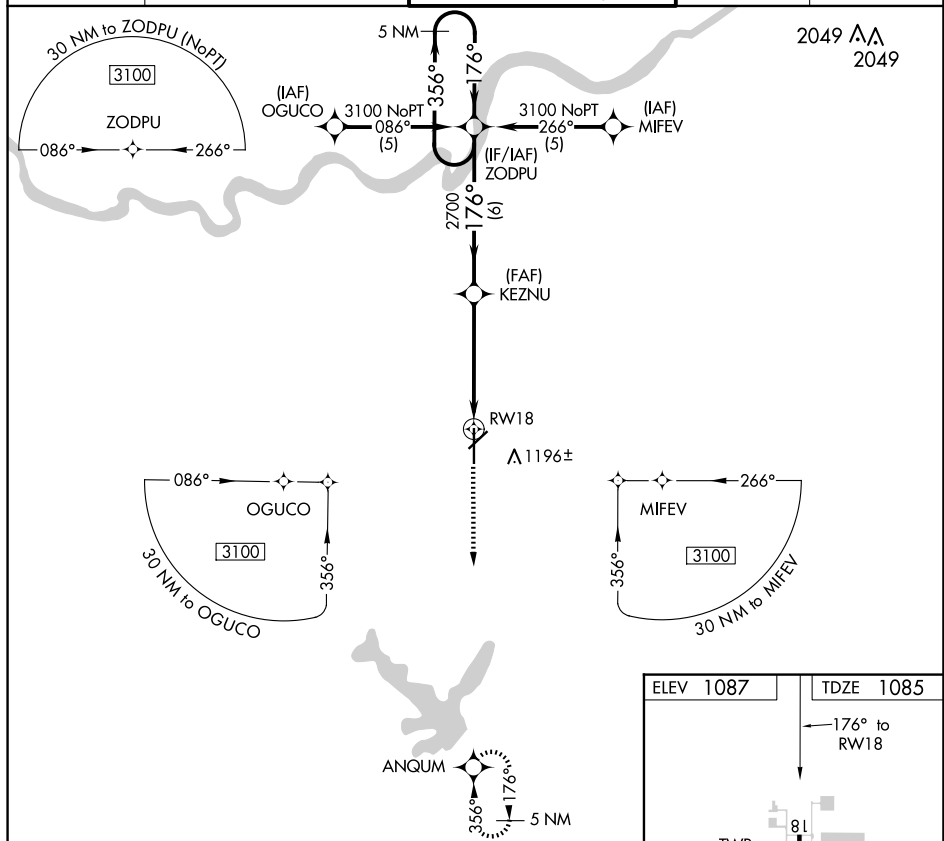
APP CRS 176°	Rwy Idg TDZE Apt Elev	7339 1085 1087
------------------------	-----------------------------	---


RNAV (GPS) RWY 18

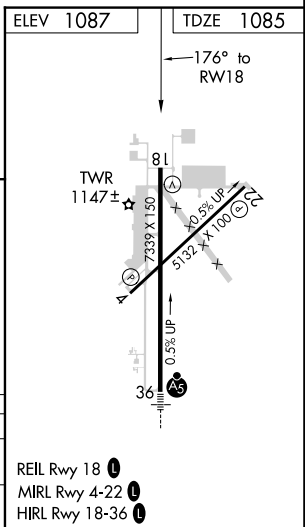
NEW CENTURY AIRCENTER (IXD)

<div style="display: flex; flex-direction: column; align-items: center;"> <div style="background-color: black; color: white; padding: 2px 5px; margin-bottom: 2px;">T</div> <div style="background-color: black; color: white; padding: 2px 5px;">A</div> </div>	<p>DME/DME RNP-0.3 NA. If local altimeter setting not received, use Johnson County Exec altimeter setting and increase all MDAs 20 feet.</p>	<p>MISSED APPROACH: Climb to 3100 direct ANQUM and hold.</p>
--	--	--

ASOS 135.325	KANSAS CITY APP CON 118.9 251.075	NEW CENTURY TOWER ★ 133.0 (CTAF) 0	GND CON 124.3	UNICOM 122.95
------------------------	---	--	-------------------------	-------------------------



CATEGORY	A	B	C	D
INAV MDA	1500-1	415 (500-1)	1500-1¼	415 (500-1¼)
 CIRCLING	1560-1	473 (500-1)	1580-1½ 493 (500-1½)	1640-2 553 (600-2)



NC-2, 07 AUG 2025 to 04 SEP 2025

NC-2, 07 AUG 2025 to 04 SEP 2025

OLATHE, KANSAS
Amdt 2A 30JAN20

38°50'N-94°53'W

NEW CENTURY AIRCENTER (IXD)
RNAV (GPS) RWY 18