

ILS or LOC RWY 36
NEW CENTURY AIRCENTER (TXD)

ASOS 135.325	KANSAS CITY APP CON 118.9 251.075	NEW CENTURY TOWER ★ 133.0 (CTAF) 0	GND CON 124.3	UNICOM 122.95
------------------------	---	--	-------------------------	-------------------------

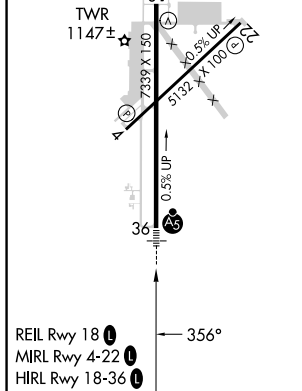


Diagram illustrating the ILS 36 approach for the S-LOC 36 and S-ILS 36 procedures. The diagram shows a 3.5 NM distance from the 2700 frequency to the 1580 frequency, and a 1 NM distance from the 1580 frequency to the 1640-2 frequency. The diagram also shows the 176° and 356° angles, and the 2700, 1580, and 1640-2 frequencies. The diagram is labeled with 'SKINI I-XD 6.4', 'ZIXAT I-XD 2.9', 'I-XD 2.4', and 'I-XD 1.4'. The diagram is also labeled with 'RUGBB TOP R-107' and 'LOC only.'

CATEGORY	A	B	C	D
S-ILS 36		1267-1/2	200 (200-1/2)	
S-LOC 36	1420-1/2	353 (400-1/2)	1420-5/8	353 (400-5/8)
C CIRCLING	1560-1	473 (500-1)	1580-1 1/2 493 (500-1 1/2)	1640-2 553 (600-2)