

WAAS
CH **61218**
W35B

APP CRS
356°

Rwy Idg
TDZE **1294**
Apt Elev **1296**

RNAV (GPS) Y RWY 35R

OKC WILL ROGERS INTL (OKC)

⚠

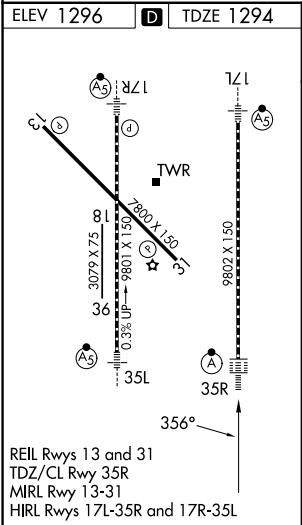
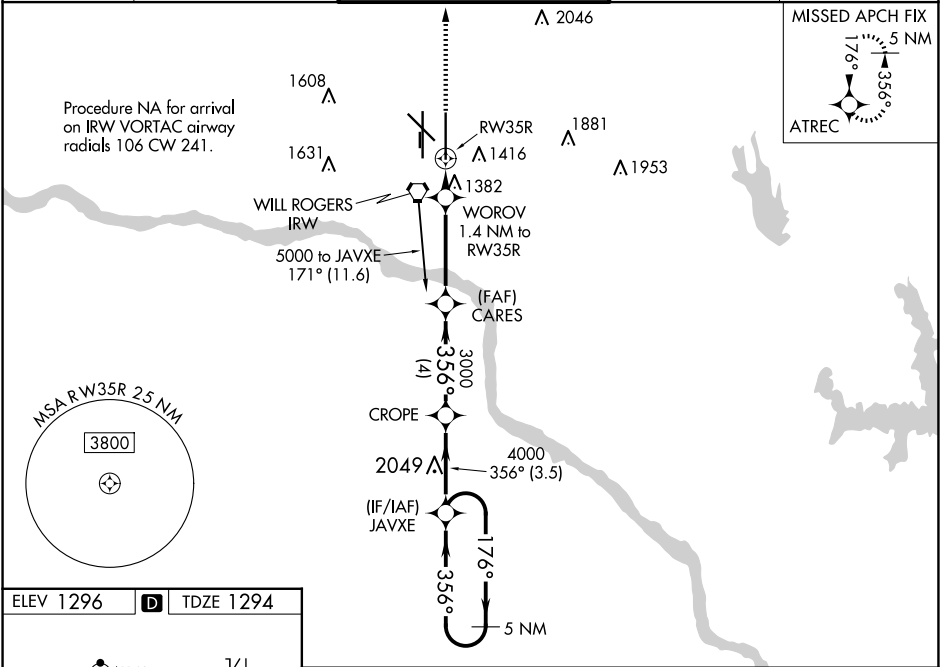
For uncompensated Baro-VNAV systems, LNAV/VNAV NA below -12°C (11°F) or above 54°C (130°F). DME/DME RNP-0.3 NA. For inop ALSF, increase LPV and LNAV/VNAV Cat E visibility to RVR 4000. Increase LNAV all Cats visibility to RVR 5500. Simultaneous approach authorized with Rwy 35L. LNAV procedure NA during simultaneous operations. Use of FD or AP providing RNAV track guidance required during simultaneous operations.

ASR

ALSF-2

MISSED APPROACH: Climb to 5000 direct ATREC and hold, continue climb-in-hold to 5000.

D-ATIS 125.85	OKC CITY APP CON 124.6 266.8	ROGERS TOWER 119.35 269.45	GND CON 121.9 348.6	CLNC DEL 124.35
-------------------------	--	--------------------------------------	-------------------------------	---------------------------



5000 ATREC	WOROV 1.4 NM to RW35R	CARES 3000	CROPE	JAVXE 5 NM Holding Pattern	5000
*LNAV only.	*0.9 NM to RW35R	*1780	3000	356°	176°
	0.9	0.5	3.8 NM	4 NM	3.5 NM
CATEGORY	A	B	C	D	E
LPV DA	1494/18		200 (200-½)		
LNAV/VNAV DA	1544/24		250 (300-½)		
LNAV MDA	1640/24	346 (400-½)	1640/40 346 (400-¾)		
CIRCLING	1740-1 444 (500-1)	1760-1 464 (500-1)	1960-1¾ 664 (700-1¾)	2000-2¼ 704 (800-2¼)	2240-3 944 (1000-3)