

APP CRS
356°

Rwy Idg
TDZE
Apt Elev

9802
1294
1296

RNAV (RNP) Z RWY 35R

OKC WILL ROGERS INTL (OKC)

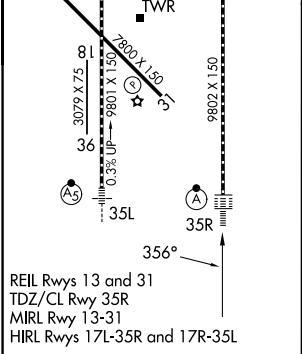
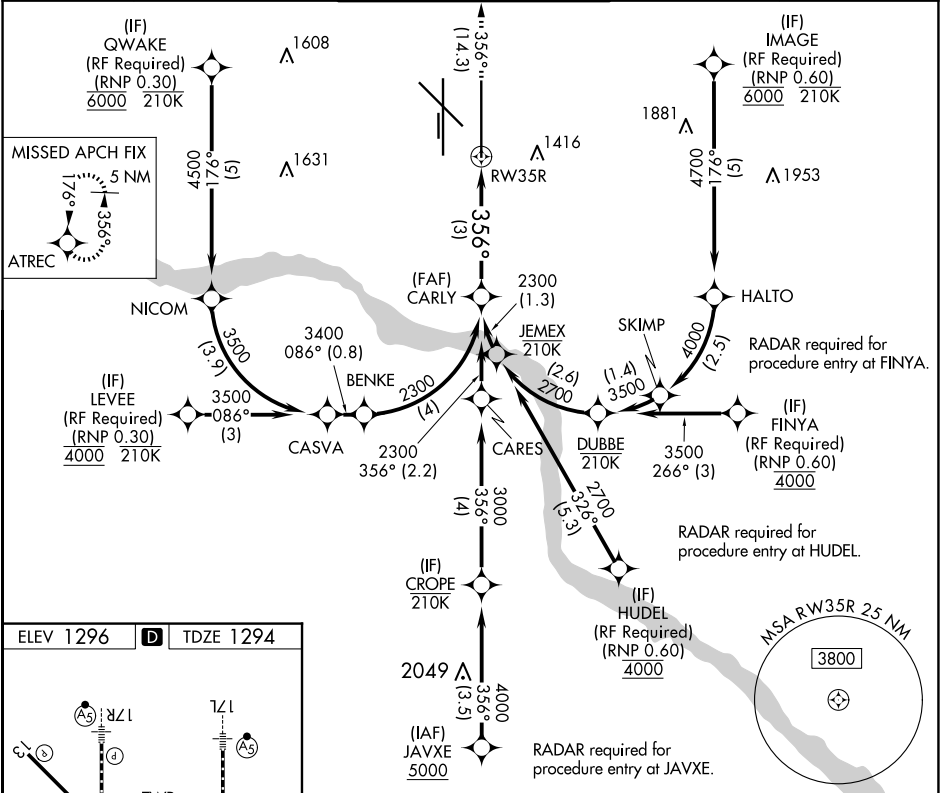
ASR

For uncompensated Baro-VNAV systems, procedure NA below -12°C (11°F) or above 54°C (130°F). GPS required. Simultaneous approach authorized with Rwy 35L.
Use of FD or AP providing RNAV track guidance required during simultaneous operations.

ALSf-2

MISSED APPROACH:
Climb to 5000 on track 356° to ATREC and hold, continue climb-in-hold to 5000.

D-ATIS 125.85	OKC CITY APP CON 124.6 266.8	ROGERS TOWER 119.35 269.45	GND CON 121.9 348.6	CNLC DEL 124.35
------------------	---------------------------------	-------------------------------	------------------------	--------------------



5000

↑

tr
356°

ATREC

See planview for multiple IF locations.

RW35R

356°

CARLY
2300

2300

GP 3.00°
TCH 56

CATEGORY	A	B	C	D
RNP 0.16 DA	1570/24 276 (300-½)			
RNP 0.30 DA	1674/39 380 (400-¾)			

AUTHORIZATION REQUIRED