

APP CRS	Rwy Idg	9800
176°	TDZE	1282
	Apt Elev	1296

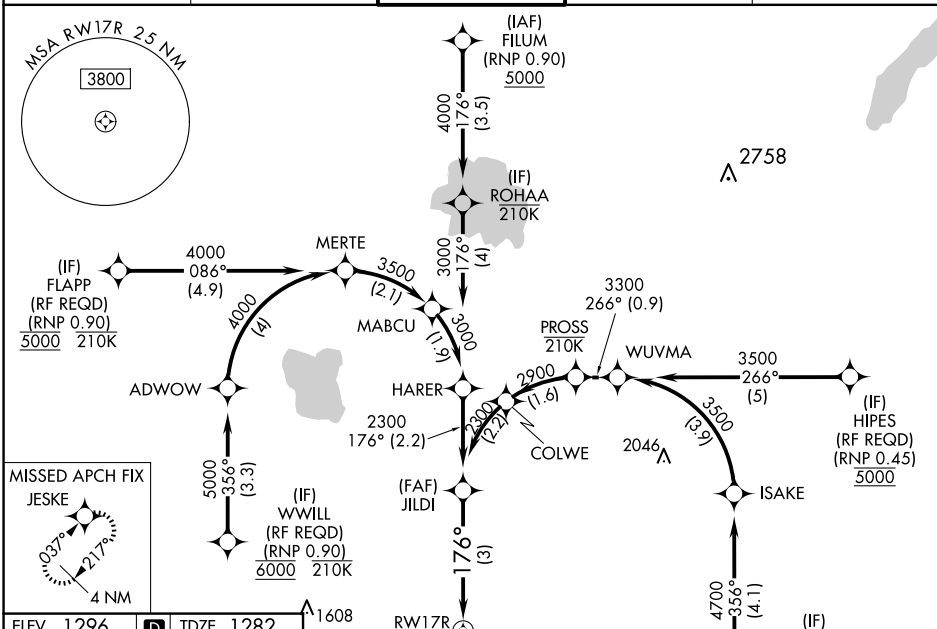
OKC WILL ROGERS INTL (OKC)

<div style="display: flex; align-items: center;"> <div style="border: 1px solid black; padding: 2px; margin-right: 5px;"> <div style="display: flex; align-items: center;"> <div style="width: 10px; height: 10px; background-color: black; margin-right: 5px;"></div> <div style="font-size: 0.8em; font-weight: bold; margin: 0;">ASR</div> </div> </div> <div> <p>For uncompensated Baro-VNAV systems, procedure NA below -13°C or above 54°C. For inop ALS, increase RNP 0.20 all Cots visibility to RVR 4500 and RNP 0.30 all Cots visibility to RVR 6000. Simultaneous approach authorized. Use of FD or AP required during simultaneous operations.</p> </div> </div>
--

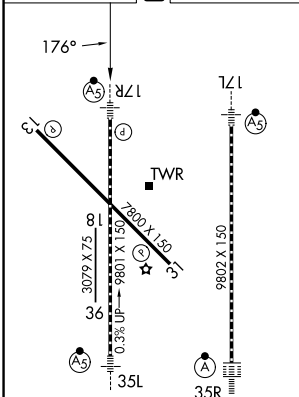


MISSED APPROACH: Climb to 2000 then climbing right turn to 3000 direct JESKE and hold.

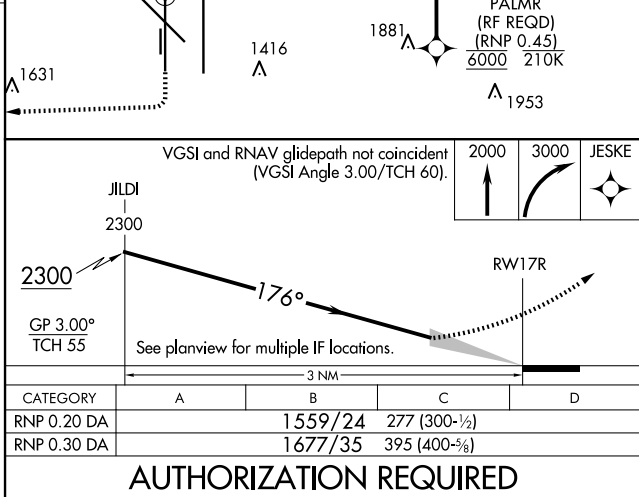
D-ATIS 125.85	OKE CITY APP CON 124.6 266.8	ROGERS TOWER 119.35 269.45	GND CON 121.9 348.6	CLNC DEL 124.35
------------------	---------------------------------	-------------------------------	------------------------	--------------------



ELEV 1296	D	TDZE 1282
-----------	----------	-----------



REIL Rwy 13 and 31
TDZ/CL Rwy 35R
MIRL Rwy 13-31
HIRL Rwy 17L-35R and 17R-35L



OKC WILL ROGERS INTL (OKC)

Amdt 2 20JUN19

RNAV (RNP) Z RWY 17R