

APP CRS 176°	Rwy Idg TDZE Apt Elev	9802 1287 1296
------------------------	-----------------------------	-------------------------------------------

RNAV (RNP) Z RWY 17L

OKC WILL ROGERS INTL (OKC)

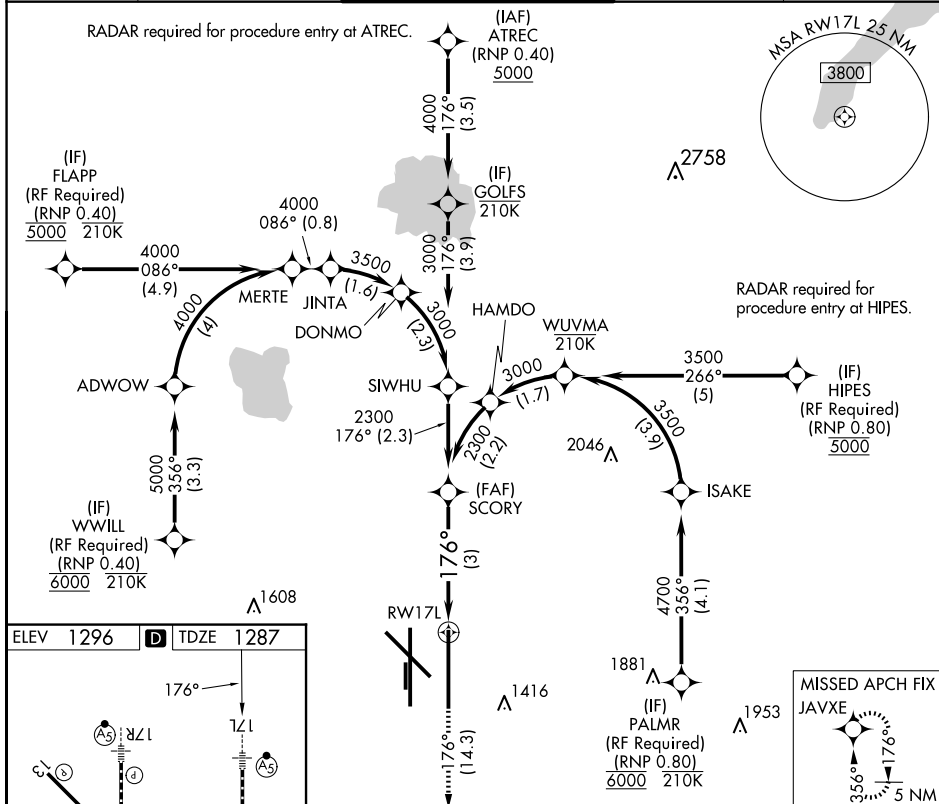
ASR For uncompensated Baro-VNAV systems, procedure NA below -12°C (11°F) or above 54°C (130°F). GPS required. Simultaneous approach authorized with Rwy 17R. Use of FD or AP providing RNAV track guidance required during simultaneous operations.

MALSR

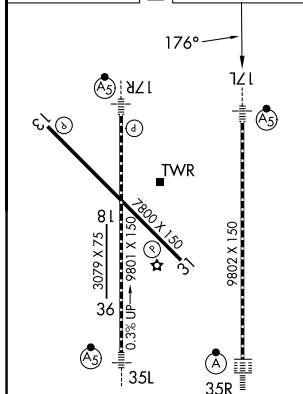
MISSED APPROACH:
Climb to 5000 on
track 176° to JAVXE
and hold, continue
climb-in-hold to 5000.

D-ATIS	OKE CITY APP CON	ROGERS TOWER	GND CON	CLNC DEL
125.85	124.6 266.8	119.35 269.45	121.9 348.6	124.35

RADAR required for procedure entry at ATREC.



ELEV 1296	D	TDZE 1287
-----------	----------	-----------



REIL Rwy 13 and 31
TDZ/CL Rwy 35R
MIRL Rwy 13-31
HIRL Rwy 17L-35R and 17R-35L

AUTHORIZATION REQUIRED

RNAV (RNP) Z RWY 17L