

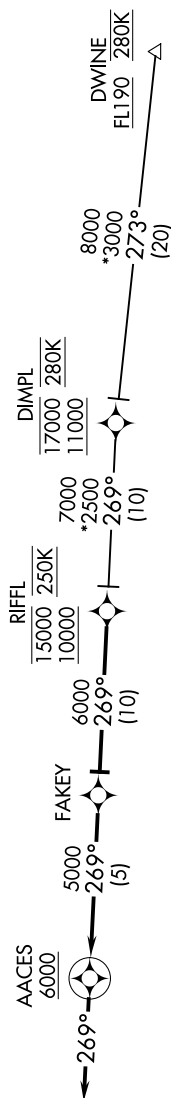
(RIFFL.RIFFL3) 24305

AL-301 (FAA)

OKC WILL ROGERS INTL (OKC)
OKLAHOMA CITY, OKLAHOMA

RIFFL THREE ARRIVAL (RNAV)

OKC D-ATIS 125.85
OKE CITY APP CON 124.2 336.4



NOTE: RADAR required.
NOTE: RNAV 1.
NOTE: DME/DME/IRU or GPS required.

NOTE: Chart not to scale.

ARRIVAL ROUTE DESCRIPTION

DIMPL TRANSITION (DIMPL.RIFFL3)
DWINE TRANSITION (DWINE.RIFFL3)

From RIFFL on track 269° to FAKEY:

LANDING RWYS 17L/R, 35L/R: From FAKEY on track 269° to cross AACES at or above 6000, then on track 269°. Expect RADAR vectors to final approach course.

RIFFL THREE ARRIVAL (RNAV)

(RIFFL.RIFFL3) 07DEC17

OKLAHOMA CITY, OKLAHOMA
OKC WILL ROGERS INTL (OKC)

SC-1, 07 AUG 2025 to 04 SEP 2025