
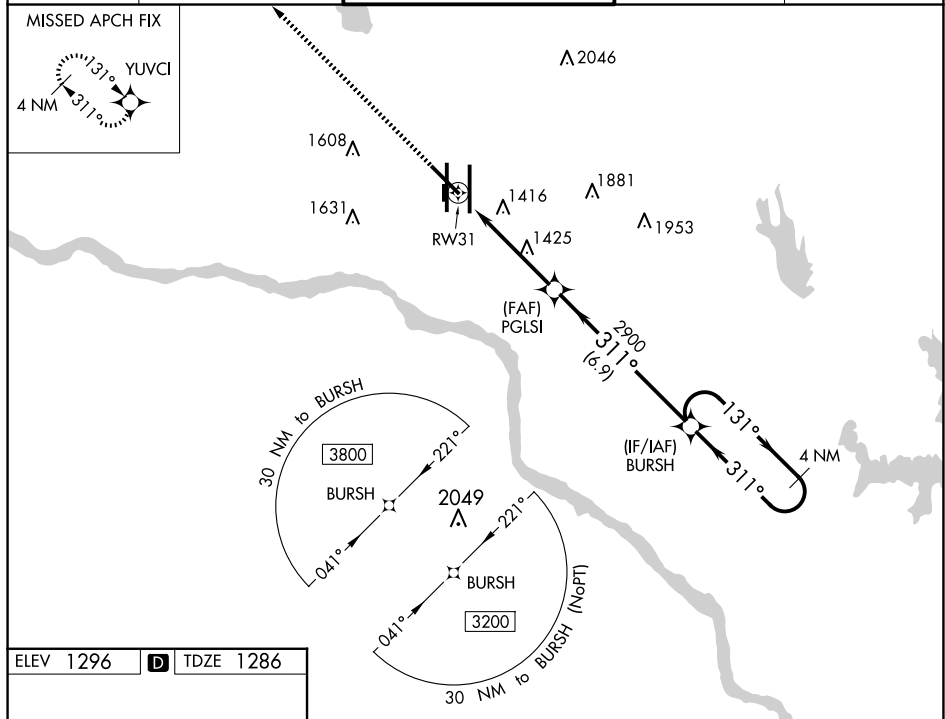


25163

WAAS CH 50225 W31A	APP CRS 311°	Rwy Idg 7800 TDZE 1286 Apt Elev 1296
--	------------------------	---

RNAV (GPS) RWY 31
OKC WILL ROGERS INTL (OKC)

 <div>DME/DME RNP-0.3 NA.</div>		<div>MISSED APPROACH: Climb to 3600 direct YUVCI and hold.</div>		
<div>D-ATIS</div> <div>125.85</div>	<div>OKE CITY APP CON</div> <div>124.6 266.8</div>	<div>ROGERS TOWER</div> <div>119.35 269.45</div>	<div>GND CON</div> <div>121.9 348.6</div>	<div>CLNC DEL</div> <div>124.35</div>



REIL Rwy 13 and 31
 TDZ/CL Rwy 35R
 MIRL Rwy 13-31
 HIRL Rwy 17L-35R and 17R-35L

OKLAHOMA CITY, OKLAHOMA
Amdt 1C 07DEC17

35°24'N-97°36'W

OKC WILL ROGERS INTL (OKC)
RNAV (GPS) RWY 31

SC-1, 07 AUG 2025 to 04 SEP 2025