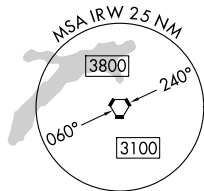
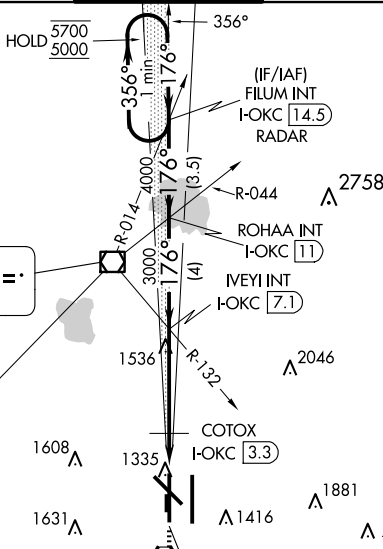


ILS or LOC RWY 17R
OKC WILL ROGERS INTL (OKC)

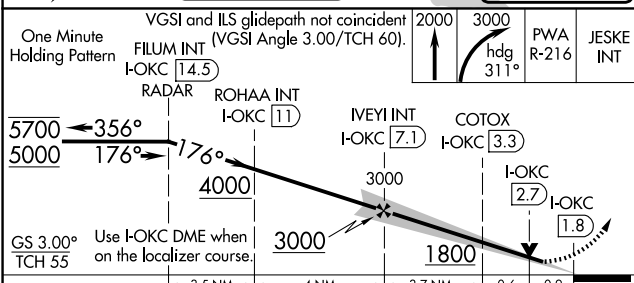
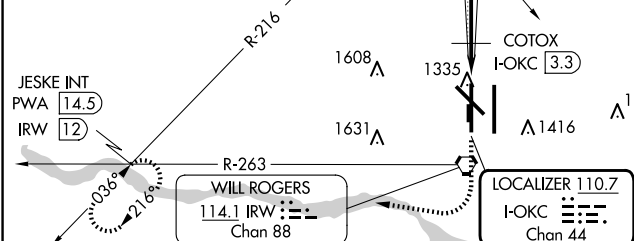
MISSED APPROACH: Climb to 2000 then climbing right turn to 3000 on heading 311° and on PWA VOR/DME R-216 to JESKE INT/PWA 14.5 DME and hold.



Diagram illustrating the alternate missed approach fix for the 12th approach. The track starts at Jeske Int, proceeds to IRW 12, then turns to R-263 (083°), and finally to PWA 113.4 (263°). The diagram also shows R-216 and R-263, and the channels Chan 88 and Chan 81.



WILEY POST
113.4 PWA :≡≡*
Chan 81



ELEV 1296 **D** TDZE 1282

176°

AS

TWR

V

7800 X 150

9801 X 150

9802 X 150

3079 X 75

36

0.3% UP

35L

35R

TDZ/CL Rwy 35R
MIRL Rwy 13-31
REIL Rwys 13 and 31
HIRL Rwys 17L-35R and 17R-35L

FAF to MAP 5.2 NM

Knots	60	90	120	150	180
Min:Sec	5:12	3:28	2:36	2:05	1:44